

monty 1620

monty 1625

Spare parts list

Liste des pieces detachees

Ersatzteilliste

Electric-pneumatic tire changer

Demonte-pneus electro-pneumatique

Elektro-pneumatische Reifenmontiermaschine

Tavole pezzi ricambio

Tabla de repuestos

Figuras das peçac

Smontagomme elettro-pneumatico

Desmontador de ruedas electro-pneumatico

Máquina de montar/desmontar pneus electro-pneumatica

HOFMANN®



USA - CANADA



U P D A T I N G G U I D E

Revision - A - of May 2011
 This release replaces **OM-SP_M-1620-1625 HNA_01-11_ZEEWH715A_AB**

Tables / Lists modified from this revision:

REMOVED:	1741	1767.a	1607.b	--	1114.a	1252
APPLIED:	1739.b	--	--	1768.a	1821	1822
PCN:	--	--	--	--	11G0043	11G0043

REMOVED:	1120	1013	1244	1121		
APPLIED:	--	--	1785	1784		
PCN:	--	--	10G0182	10G0182		
			11G0042	11G0042		

Revision - B - of August 2011
Tables / Lists modified from this revision:

REMOVED:	1743.a	1751	1122.c	TEEWH001S	TEEWH001A
APPLIED:	1230.b	1091.c	1091.c	0027324	0027327
PCN:	11G0092	11G0092	11G0092	11G0092	11G0092

Revision - C - of October 2011
Tables / Lists modified from this revision:

REMOVED:	1768.a
APPLIED:	1768.b
PCN:	11G0216



THIS PART IS FOR EXCLUSIVE USE OF QUALIFIED PERSONNEL FOR MAINTENANCE AND SERVICE PURPOSES.

CETTE PARTIE EST RESERVEE AU PERSONNEL QUALIFIE ET AUTORISE A LA MAINTENANCE ET AU SERVICE APRES-VENTE.

DIESER ABSCHNITT IST AUSSCHLIESSLICH DEM WARTUNGSFACH- UND KUNDENDIENSTPERSONAL VORBEHALTEN

QUESTA PARTE É AD USO ESCLUSIVO DEL PERSONALE QUALIFICATO ED AUTORIZZATO ALLA MANUTENZIONE ED ASSISTENZA.

ESTA PARTE ES PARA USO EXCLUSIVO DEL PERSONAL CALIFICADO Y AUTORIZADO PARA EL MANTENIMIENTO Y LA ASISTENCIA.

ESTA PARTE ES PARA USO EXCLUSIVO POR PESSOAL ESPECIALIZADO ED AUTORIZATO A LA MANUTENÇÃO

On order specify: type of machine and serial number item code and quantity.

A la commande: bien préciser le type de la machine, le n° de serie, la référence de pièce, la quantité.

Bei Auftragserteilung anzugeben: Maschinentype, Serinnummer, Artikel-Code, Menge.

All'ordine specificare: tipo macchina e matricola, codice e quantità del particolare.

En cada pedido hay que especificar: el tipo de máquina y su número de matrícula, el número de código de la pieza requerida y su cantidad.

Na encomenda especifique: tipo da máquina e número de série, código do item e quantidade.

Snap-on P/N.	GB		FR		DE	
	IT	Symbol's Meaning	ES	La signification du symbole	PT	Bedeutung des Symbols Meaning do símbolo
XXX	Bold = Available from Stock	Audacieux = Immédiatement Disponible				Fett = Sofort Vorhanden
XXX	Grassetto = Immediatamente Disponibile	En negrilla = Immediatamente Disponible				Realce = Immediatamente Disponível
*XXX	Normal = Available on Request	Normale = disponible sur demande				Normal = Vorhanden auf Antrag
	Normale = Disponibili a Richiesta	Normal = disponible a petición				Normal = Disponível no Pedido
	Asterisk = Suggested Spare Parts	Asterisque = Pièces de Rech. Suggérées				Sternchen = Vorgeschlagene Ersatzteile
	Asterisco = Ricambi Consigliati	Asterisco = Piezas de Repu. Sugeridas				Asterisco = Peças Reposição Sugeridas

6

5

4

3

2

1

09/2009

1124.h

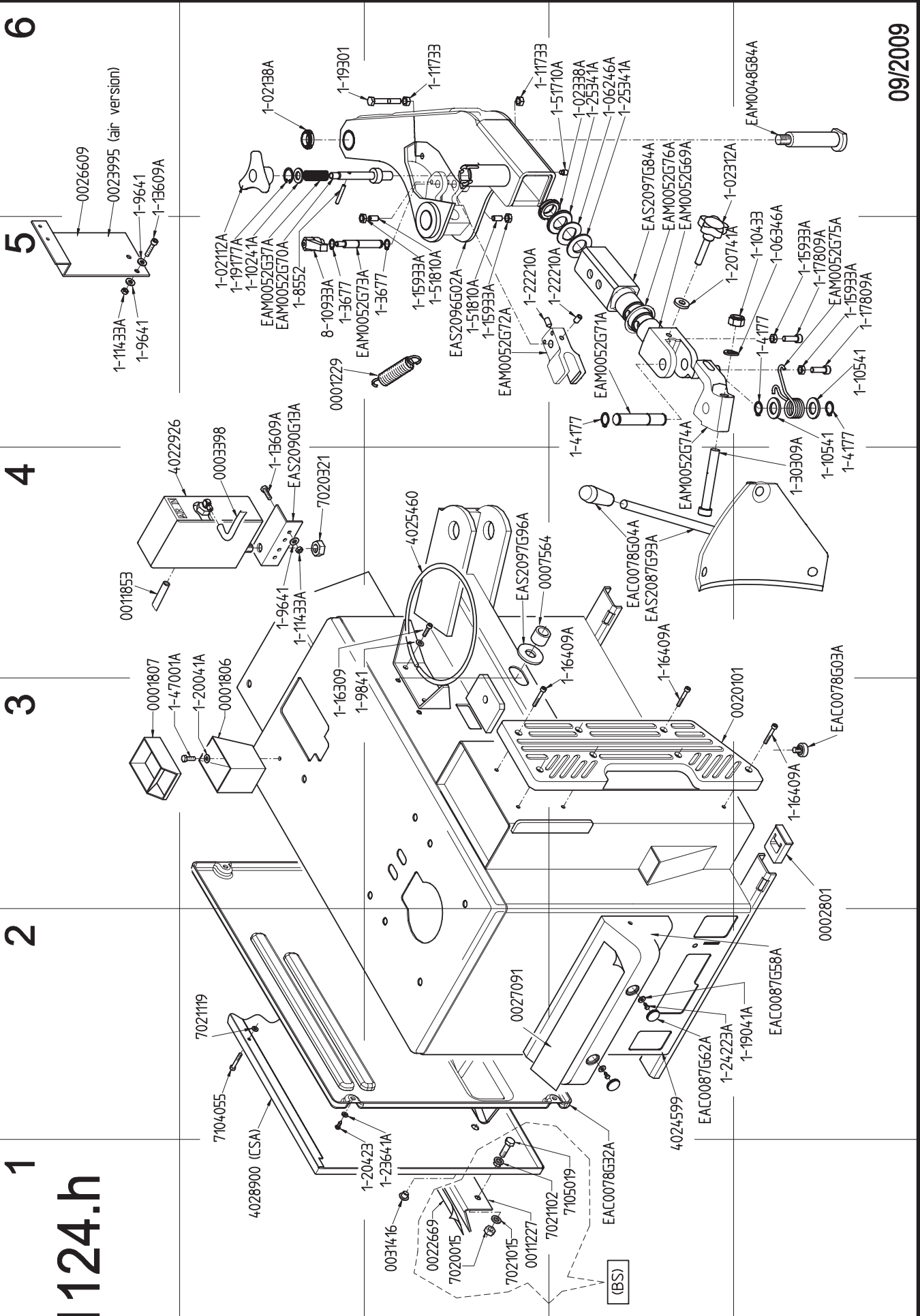
A

B

C

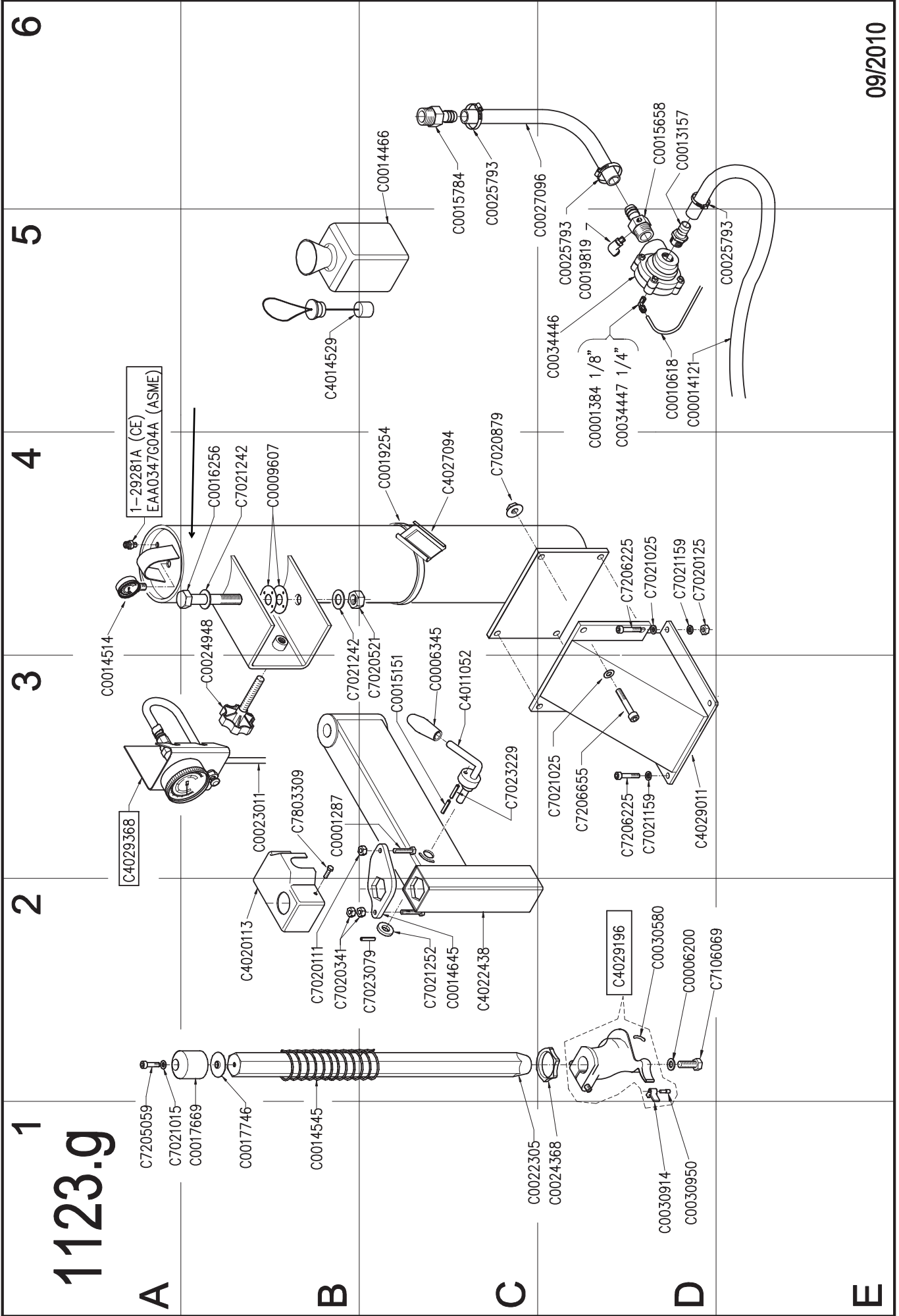
D

E



Booklet number: 131 _ REV. C _

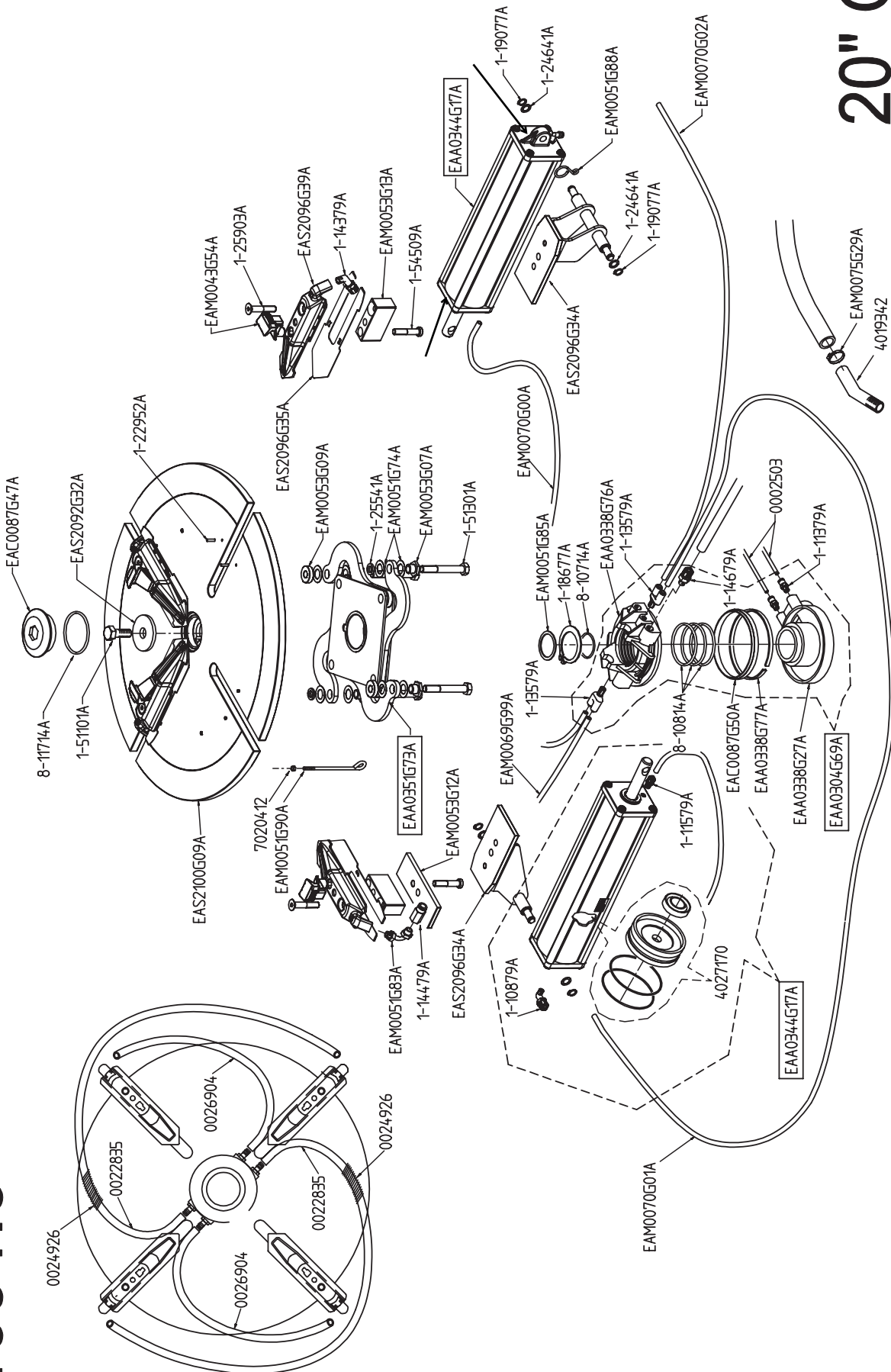
1123.g



1091.C

20" GT

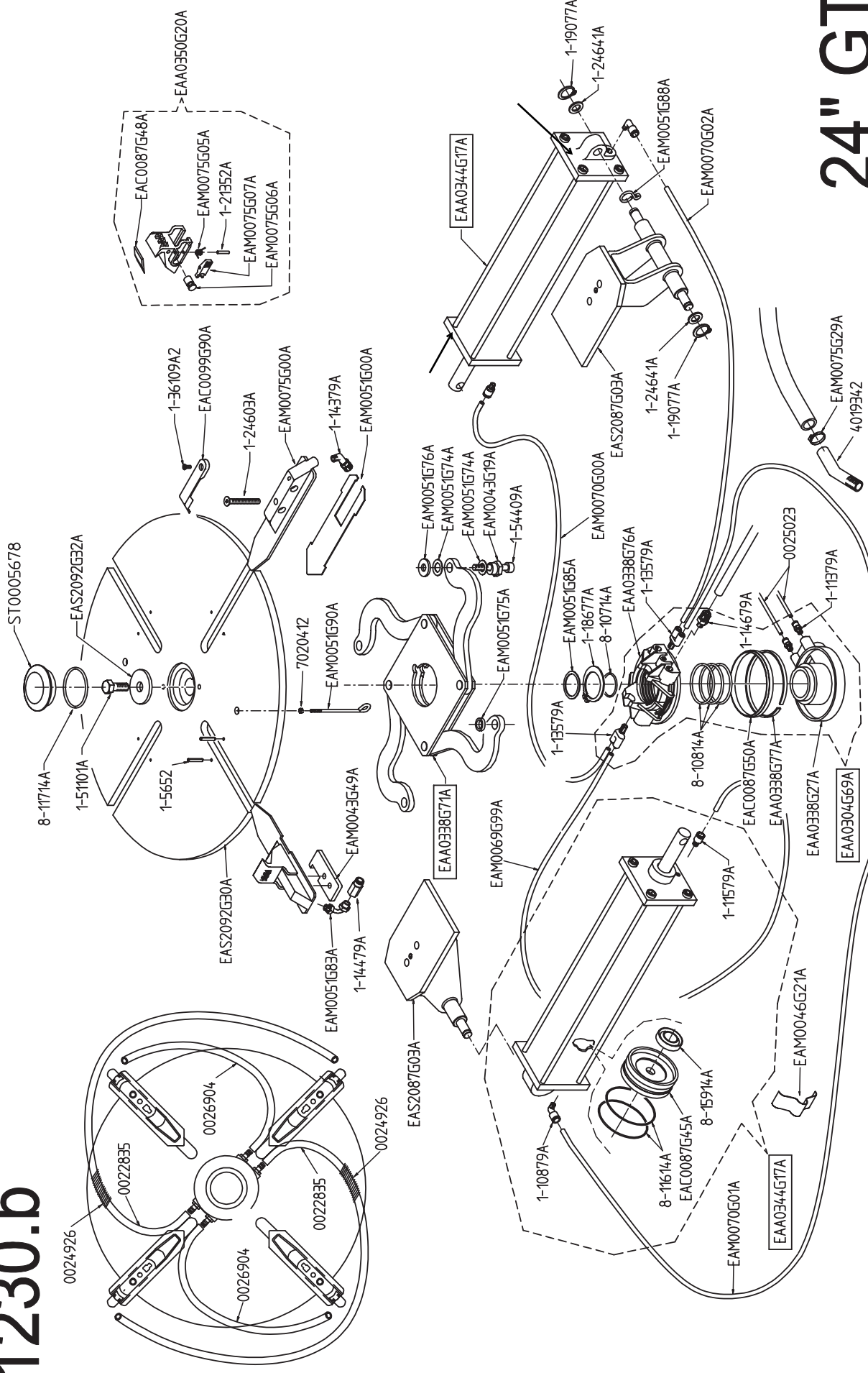
09/2011

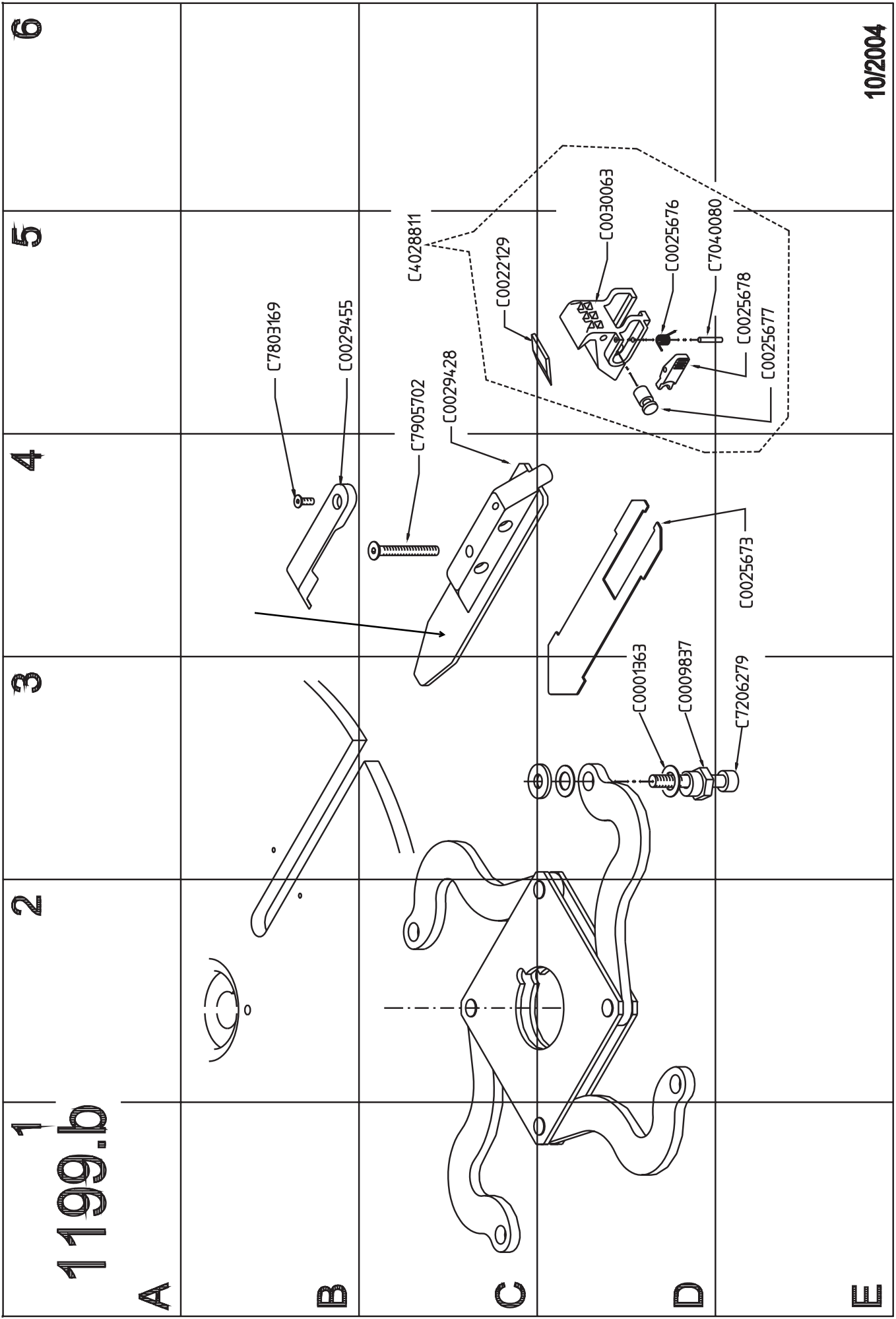


24" GT

Booklet number: 131 _ REV. C _

1230.b





10/2004

Booklet number: 131 _ REV. C _

1

1396.b

2

3

4

5

6

A

B

C

D

E

C4027311 (1ph-115v)

C0030939

C7704239

C0029936

C7704529

C7021039

C7021012

C7020015

C1014451 (1Ph-115V)

C0001951

C7020039

C7021102

C0010491

C7021102

C7020015

C7021015

C7105102

C4020206

C7021102

C7021159

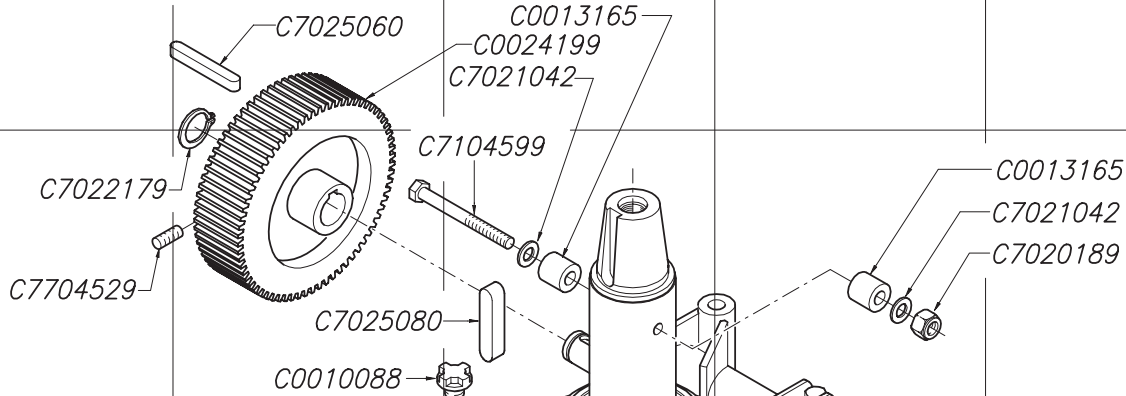
C7020125

C7105431

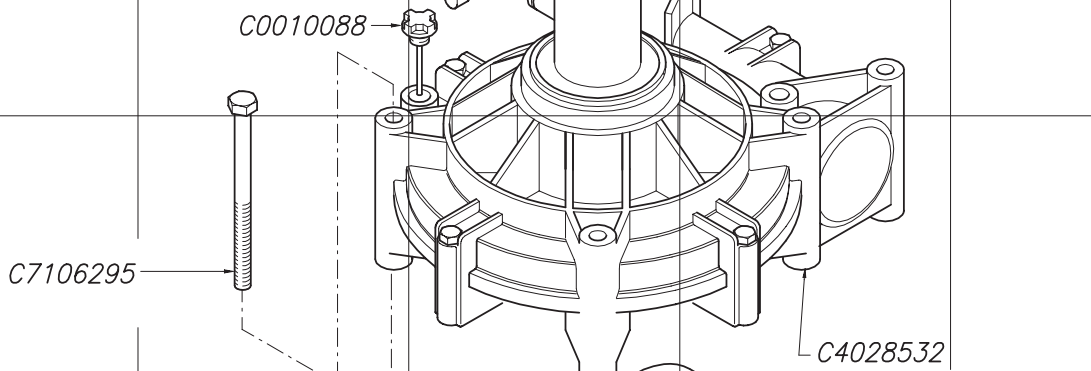
10/2007

1245.a

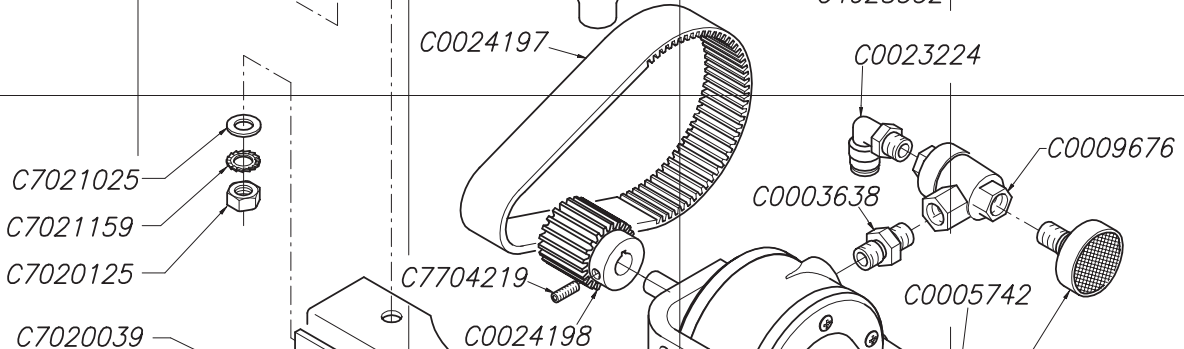
A



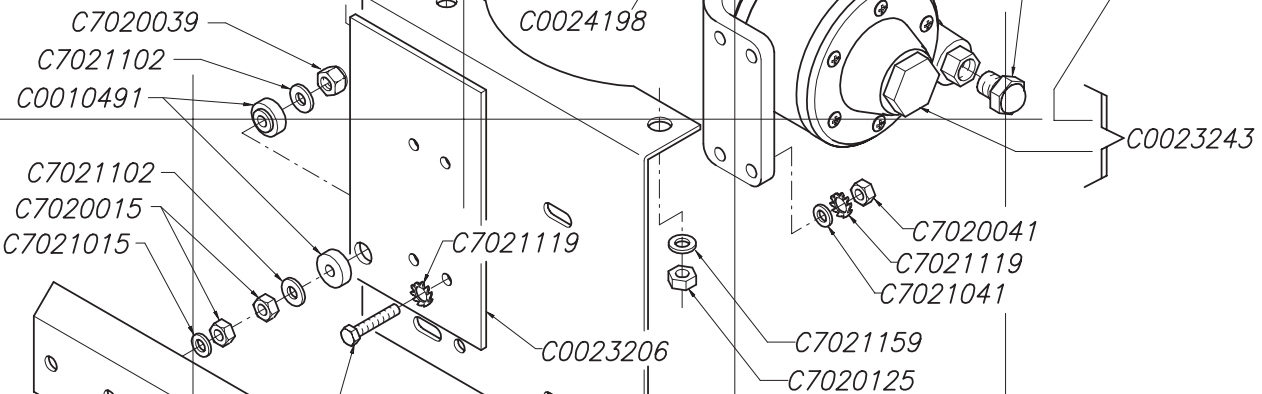
B



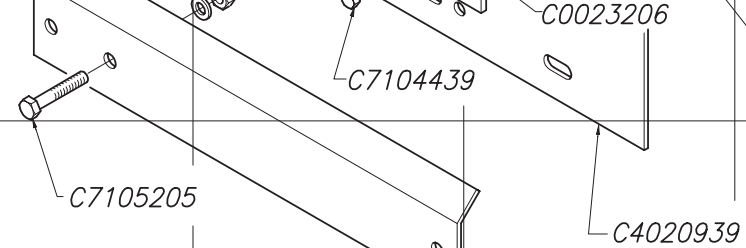
C



D



E



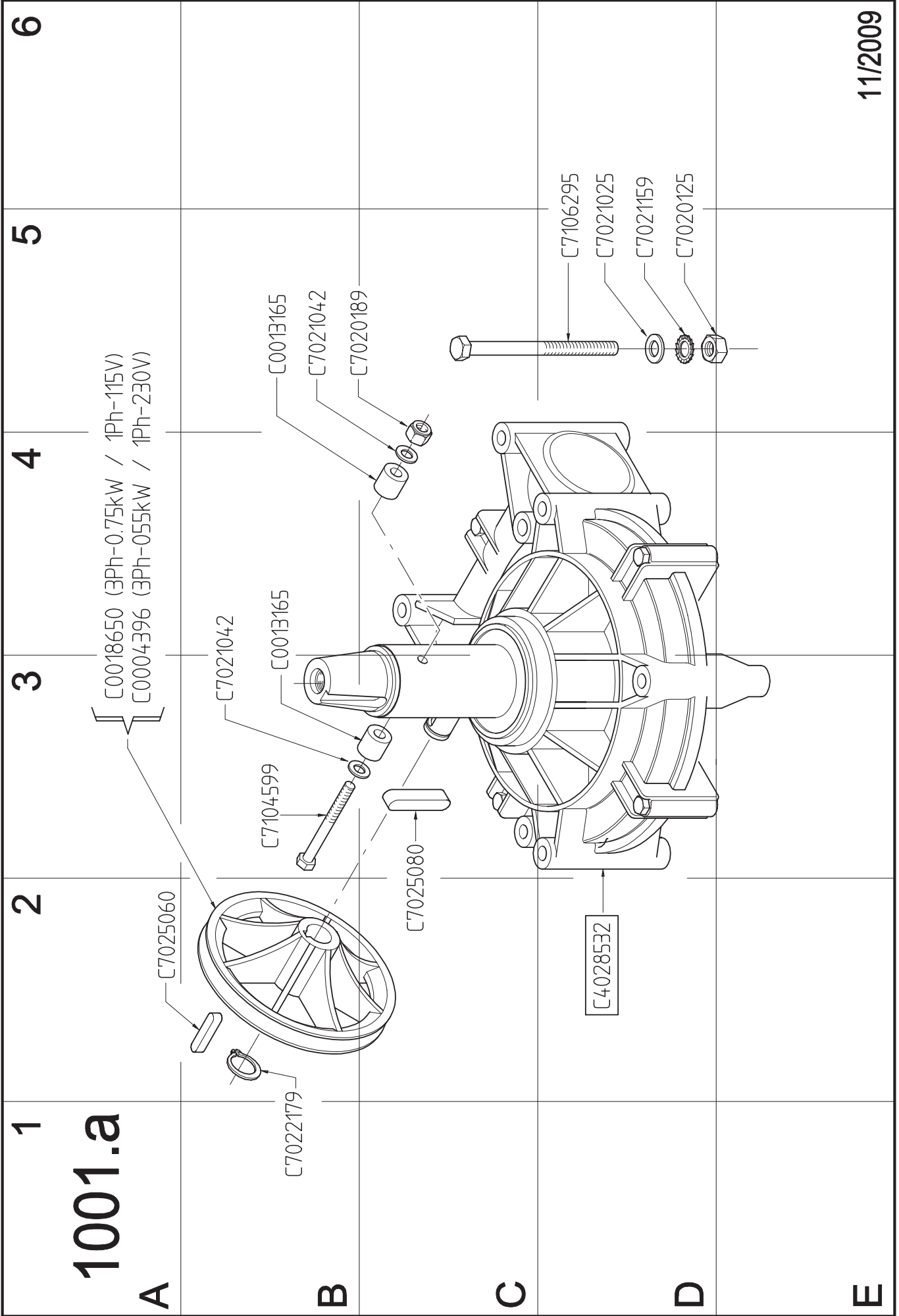
F



AIR VERSION

11/2009

Booklet number: 131 _ REV. C _



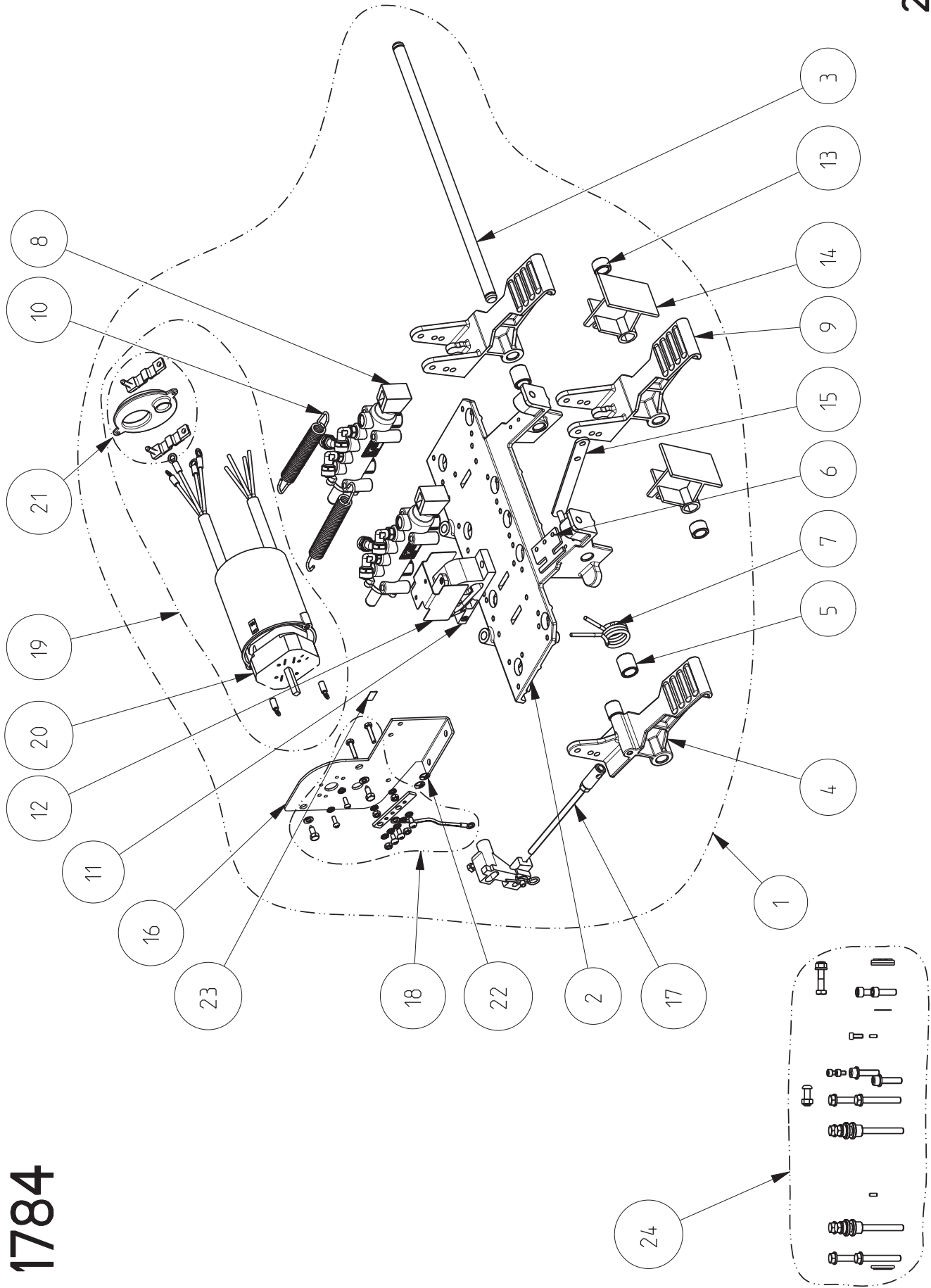


Table 1784: FOOT PEDAL 3P ASSY

No.	Snap-on P/N.	Designation Designazione	Désignation Designación	Bezeichnung Designação	Q.ty	Note	Norma
1	EAA0362G02A	GRUPPO PEDALIERA 1F CSA 3P SX FOOT PEDAL ASM 3P 1PH CSA (L)	GROUPE JEU PÉDALES 1PH CSA 3P G JUEGO DE PEDALES 3 PEDALES	PEDALSTEUERUNG 1 PH. CSA 3 P LI GRUPO PEDALEIRA 1 F CSA 3P ESQ	1		
2	EAM0068G80A	SUPPORTO PEDALIERA - LAVORATO PEDAL ASM SUPPORT - MACHINED	SUPPORT JEU PÉDALES - USINÉ SOPORTE JUEGO DE PEDALES -	LAGER PEDALSTEU. - BEARBEITET SUORTE PEDALEIRA - TRABALHADO	1		
3	EAM0068G10A	PERNO FULCRO PEDALI SHAFT-HINGE PEDAL	PIVOT AXE PÉDALES EJE PEDALES	DREHBOLZEN PEDALE PERNO FULCRO PEDAIS	1		
4	EAA0356G93A	PEDALE SWITCH SX LEFT SWITCH FOOT PEDAL	INTERRUPTEUR PÉDALE GAUCHE PEDAL INTERRUPTOR IZQ.	PEDAL SCHALTER LINKS INTERRUPTOR ESQUERDO PEDAL	1		
5	EAM0048G79A	BOCCOLA CENTRAGGIO MOLLA BUSHING CENTERING SPRING	DOUILLE CENTRAGE RESSORT CASQUILLO CENTRAJE MUELLE	ZENTRIERBUCHSE FEDER ANILHA CENTRAGEM MOLA	2		
6	EAM0070G32A	GUIDA MOLLA INVERTITORE COMMUTATOR SPRING GUIDE	GUIDE RESSORT INVERSEUR GUÍA MUELLE INVERSOR	FEDERFÜHRUNG WENDEGETRIEBE GRUPO PEDALEIRA 1 F CSA 3P ESQ	1		
7	EAM0048G78A	MOLLA PEDALE INTERRUPTORE SPRING, PEDAL SWITCH	RESSORT INTERRUPTEUR PÉDALE MUELLE PEDAL INTERRUPTOR	FEDER PEDALSCHALTER MOLA INTERRUPTOR PEDAL	1		
8	EAA0356G94A	VALVOLA STALLONATORE VALVE BEAD-BREAKER	VALVE DÉTALONNEUR VÁLVULA DESTALONADOR	ABDRÜCKERVENTIL VÁLVULA REMOVEDOR TALÃO	2		
9	EAM0068G95A	PEDALE STANDARD - LAVORATO STANDARD PEDAL MACHINED	PÉDALE STANDARD - USINÉE PEDAL ESTÁNDAR - TRABAJADO	STANDARDPEDAL - BEARBEITET PEDAL PADRÃO - TRABALHADO	2		
10	EAM0075G91A	MOLLA RITORNO PEDALI SPRING RECALL PEDALS	RESSORT RETOUR PÉDALES MUELLE RETORNO PEDALES	RÜCKZUGFEDER PEDAL MOLA RETORNO PEDAIS	2		
11	EAC0099G29A	CAMMA PEDALE CAM PEDAL	CAME PÉDALE LEVA PEDAL	SCHALTNOCKE CAMES PEDAL	1		
12	EAS2115G09A	LAMIERA PROTEZIONE CAMMA PROTECTION SHEET FOR CAM	TOLE PROTECTION CAME CHAPA PROTECCIÓN LEVA	SCHUTZBLECH SCHALTNOCKEN CHAPA PROTEÇÃO CAMES	1		
13	EAM0070G46A	DISTANZIALE L=12 mm SPACER L=12 mm CENTERING SPRING	ENTRETOISE L=12 mm DISTANCIADOR L=12 mm	DISTANZSTÜCK L=12 mm DISTANCIADOR=12mm	1		
14	EAC0096G11A	DISTANZIALE PEDALI ST.1113/2 SPACER-PEDAL	ENTRETOISE PÉDALES ST.1113/2 DISTANCIADOR PEDALES ESTÁNDAR	DISTANZSTÜCK PEDALE DISTANCIADOR PEDAIS ST.1113/2	2		
15	EAS2111G73A	BIELLA POSIZIONATRICE PEDALE ROD POSITIONER PEDAL	BIELLE DE POSITION PEDALE BIELA POSICIONADORA PEDAL	PLEUELSTANGE PEDAL BIELA POSICIONADORA PEDAL	1		
16	EAS2111G58A	LAMIERA SUPPORTO SWITCH SWITCH SHEET SUPPORT	TOLE SUPPORT INTERRUPTEUR CHAPA SOPORTE INTERRUPTOR	TRAGBLECH SCHALTER CHAPA SUPORTE INTERRUPTOR	1		
17	EAA0347G61A	BIELLA COMANDO INVERTITORE ROD, REGISTER-REVERSING GEAR	BIELLE COMMANDE INVERSEUR BIELA COMANDO INVERSOR	BETÄTIGUNGSTANGE WENDEGETR. BIELA COMANDO INVERSOR	1		
18	EAK0279G40A	KIT VITI COLLEGAMENTO SWITCH NUTS/BOLTS FOR SWITCH	KIT VIS FIXATION INVERSEUF KIT TORNILLOS CONEXIÓN	SCHRAUBENSATZ SCHALTER KIT PARAFUSOS DO INTERRUPTOR	1		
19	EAA0358G82A	GRUPPO INVERTITORE 1F 115V ASSY REVERSING SWITCH 1PH 115V	GROUPE INVERSEUR 1PH. 115V GRUPO INVERSOR MONOF. 115 V	GRUPPE WENDEGETRIEBE 1 PH 115 V GRUPO INVERSOR 1F 115V	1		
20	2-15459A	INVERTITORE MONOF.SOLO FRUTTO SWITCH ASSY - SINGLE PHASE (-)	INVERSEUR MONOPH. CORPS SEUL INVERSOR MONOF. SÓLO MECANISMOC	WENDEGETRIEBE 1PH NUR INVERSOR MONOFÁSICO SÓ CORPC	1		

Table 1784: FOOT PEDAL 3P ASSY

No.	Snap-on P/N.	Designation Designazione	Désignation Designación	Bezeichnung Designação	Q.ty	Note	Norma
21	EAK0279G41A	KIT PER CAVO KIT FOR CABLE	KIT POUR CÂBLE KIT PARA CABLE	SATZ FÜR KABEL KIT PARA CABO	1		
22	8-23762A	TARGA TERRA *1 FOGLIO N.15 TARG(B) LABLE, GROUND(B)	PLAQUE DE TERRE *1 FOGLIO N.15 PLACA DE TIERRA (B)	ERDUNGSSCHILD *1 BLATT 15 STÜCK (B) PLACA TERRA *1 FOLHA N.15 PLAC(B)	2		
23	EAL0383G21A	TARGA S 1 INVERTITORE LABEL S 1 REVERSRING GEAR	PLAQUE S 1 INVERSEUR PLACA S 1 INVERSOR	SCHILD S 1 WENDEGETRIEBE PLACA S 1 INVERSOR	1		
24	EAK0279G39A	KIT VITI PEDALIERA NUTS/SCREWS FOR FOOT PEDAL ASM	KIT VIS JEU PÉDALES KIT TORNILLOS JUEGO DE PEDALES	SCHRAUBENSATZ PEDALSTEUERUNG KIT PARAFUSOS PEDALEIRA	1		

Booklet number: 131 _ REV. C _

B L A N K P A G E

2010/10

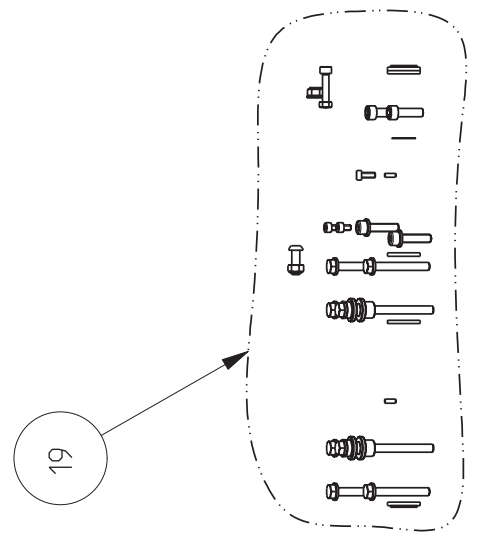
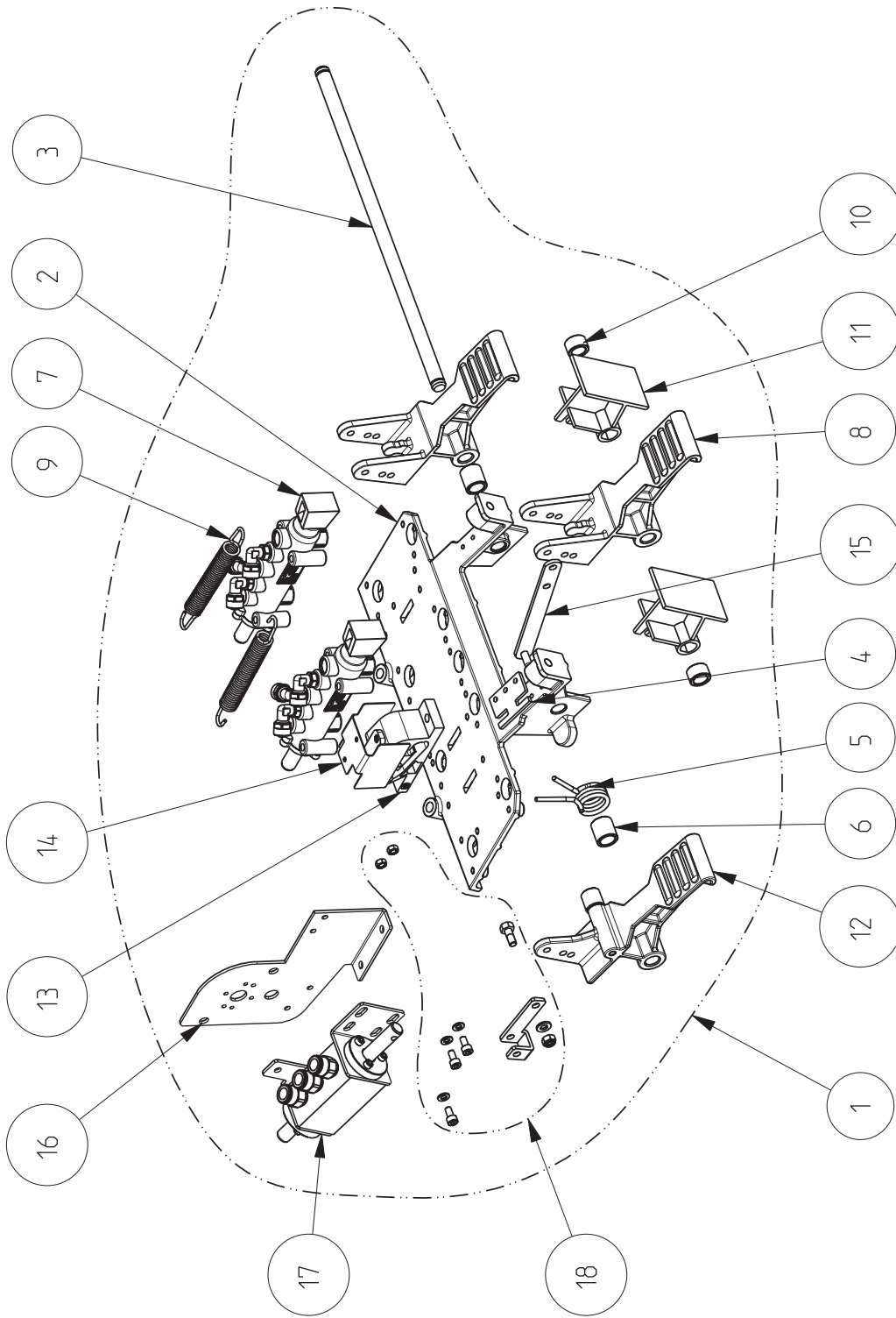
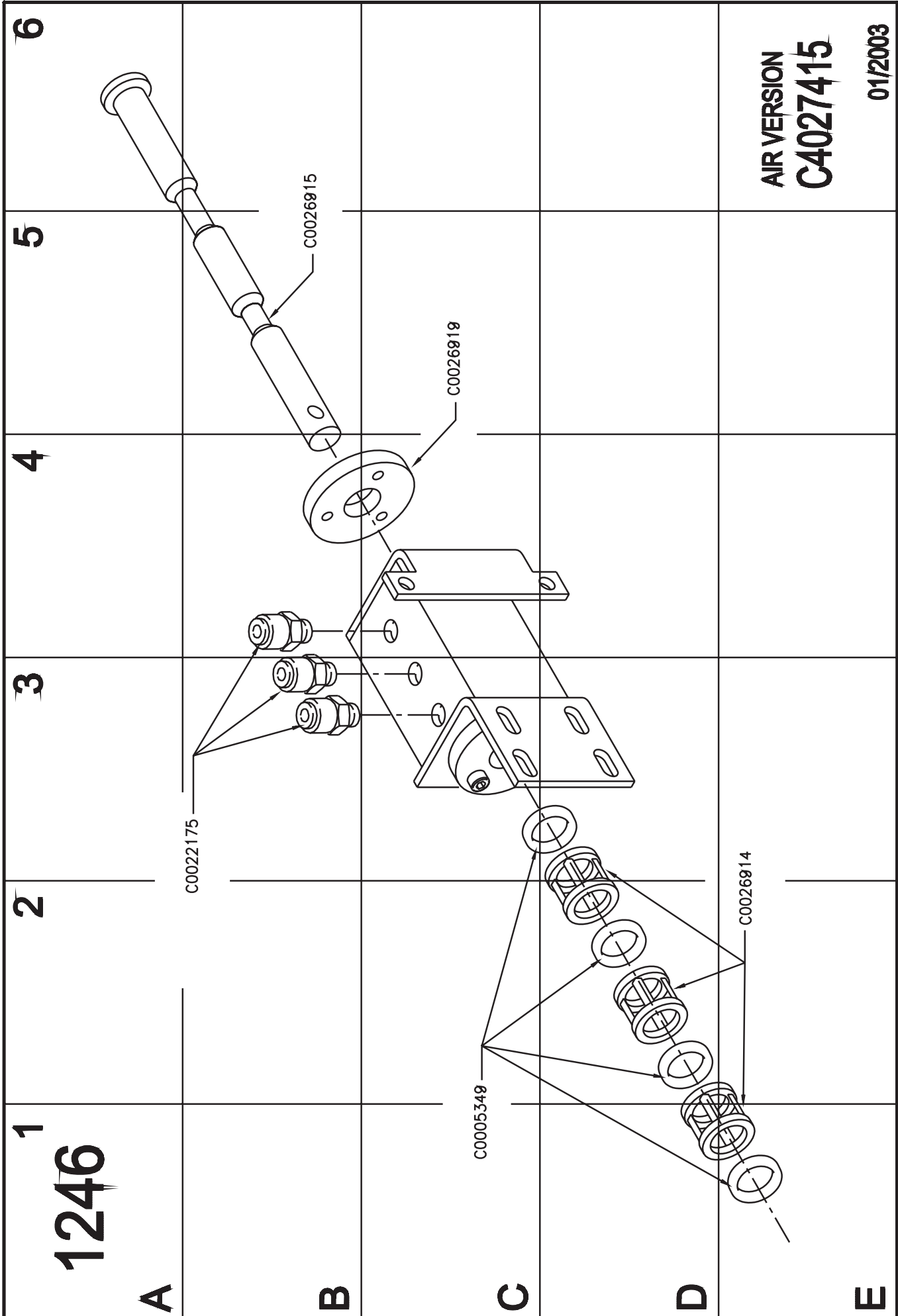


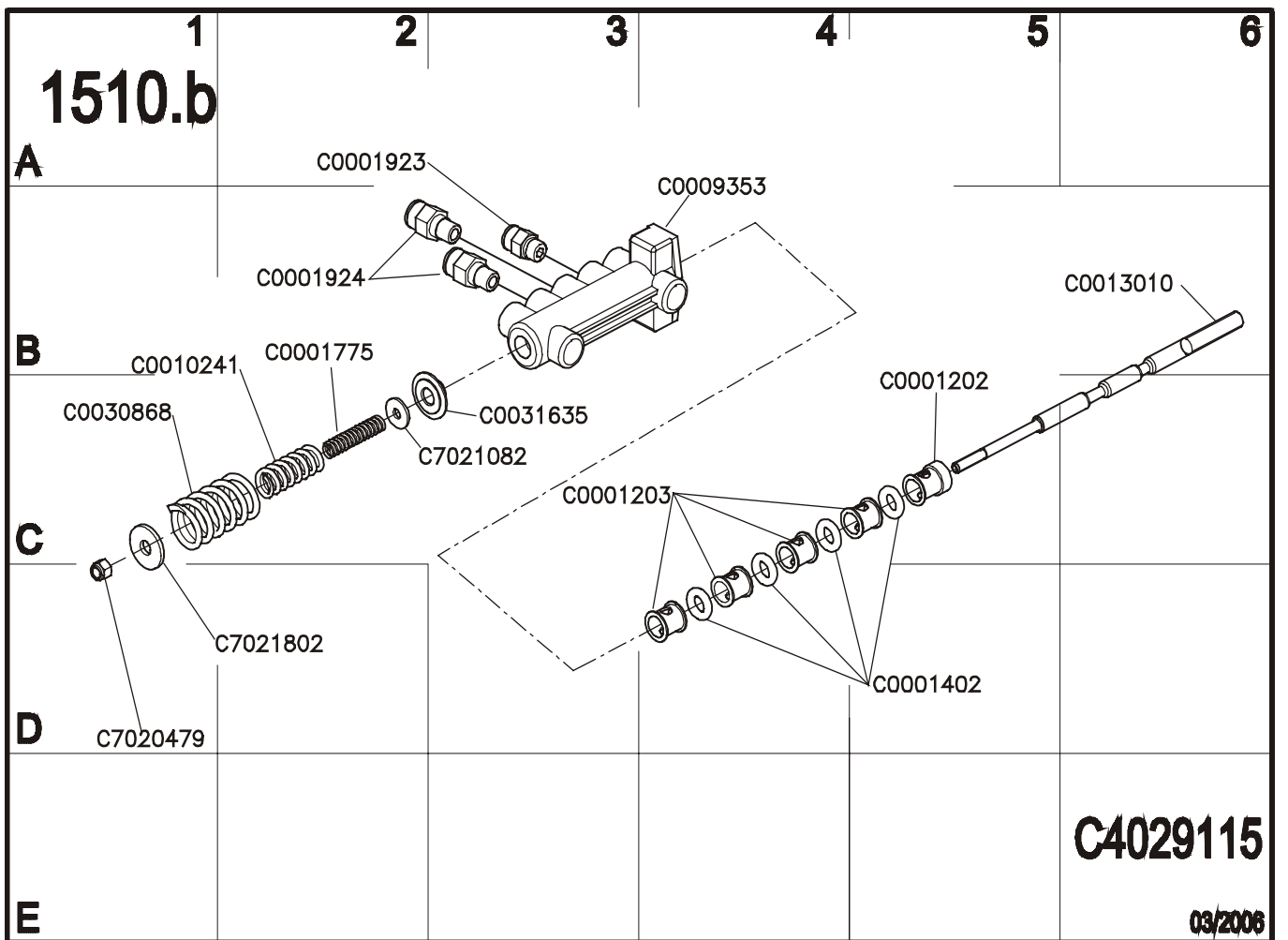
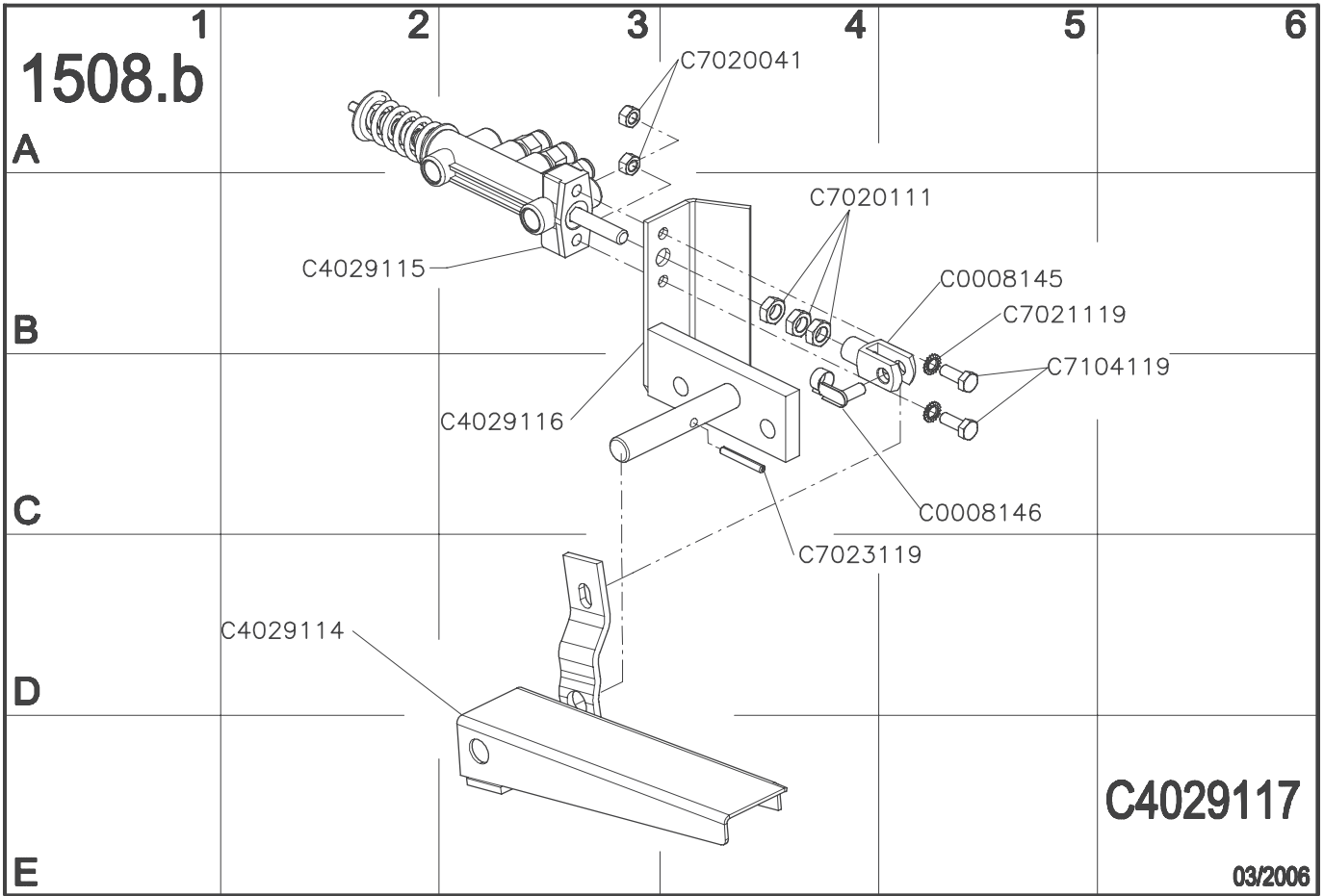
Table 1785: FOOT PEDAL 3P LEFT AIR

No.	Snap-on P/N.	Designation Designazione	Désignation Designación	Bezeichnung Designação	Q.ty	Note	Norma
1	EAA0362G05A	GRUPPO PEDALIERA 3P SX ARIA FOOT PEDAL ASM 3P LEFT AIR	GROUPE JEU PÉDALES 3P G AIR JUEGO DE PEDALES 3 PEDALES IZQ.	PEDALSTEUERUNG 4 P. LUFT LI GRUPO PEDALEIRA 3P ESQ AR	1		
2	EAM0068G80A	SUPPORTO PEDALIERA - LAVORATO PEDAL ASM SUPPORT - MACHINED	SUPPORT JEU PÉDALES SOPORTE JUEGO DE PEDALES -	LAGER PEDALSTEU. - BEARBEITET SUORTE PEDALEIRA - TRABALHADO	1		
3	EAM0068G10A	PERNO FULCRO PEDALI SHAFT-HINGE PEDAL	PIVOT AXE PÉDALES EJE PEDALES	DREHBOLZEN PEDAL PERNO FULCRO PEDAIS	1		
4	EAM0070G32A	GUIDA MOLLA INVERTITORE COMMUTATOR SPRING GUIDE	GUIDE RESSORT INVERSEUR GUÍA MUELLE INVERSOR	FEDERFÜHRUNG WENDEGETRIEBE GUIA MOLA COMUTADOR	1		
5	EAM0048G78A	MOLLA PEDALE INTERRUPTORE SPRING, PEDAL SWITCH	RESSORT INTERRUPTEUR PÉDALE MUELLE PEDAL INTERRUPTOR	FEDER PEDALSCHALTER MOLA INTERRUPTOR PEDAL	1		
6	EAM0048G79A	BOCCOLA CENTRAGGIO MOLLA BUSHING CENTERING SPRING	DOUILLE CENTRAGE RESSORT CASQUILLO CENTRAJE MUELLE	ZENTRIERBUCHSE FEDER ANILHA CENTRAGEM MOLA	2		
7	EAA0356G94A	VALVOLA STALLONATORE VALVE BEAD-BREAKER	VALVE DÉTALONNEUR VÁLVULA DESTALONADOR	ABDRÜCKERVENTIL VÁLVULA REMOVEDOR DE TALÃO	2		
8	EAM0068G95A	PEDALE STANDARD - LAVORATO STANDARD PEDAL MACHINED	PÉDALE STANDARD - USINÉE PEDAL ESTÁNDAR - MECANIZADO	STANDARDPEDAL - BEARBEITET PEDAL PADRÃO - TRABALHADO	2		
9	EAM0075G91A	MOLLA RITORNO PEDALI SPRING RECALL PEDALS	RESSORT RETOUR PEDALES MUELLE RETORNO PEDALES	RÜCKZUGFEDER PEDAL MOLA RETORNO PEDAIS	2		
10	EAM0070G46A	DISTANZIALE L=12 mm SPACER L=12 mm CENTERING SPRING	ENTRETOISE L=12 mm DISTANCIADOR L=12 mm	DISTANZSTÜCK L=12 mm DISTANCIADOR L=12mm	2		
11	EAC0096G11A	DISTANZIALE PEDALI ST.1113/2 SPACER-PEDAL	ENTRETOISE PÉDALES ST.1113/2 DISTANCIADOR PEDALES ESTÁNDAR	DISTANZSTÜCK PEDALE DISTANCIADOR PEDAIS ST.1113/2	2		
12	EAA0356G93A	PEDALE SWITCH SX LEFT SWITCH FOOT PEDAL	INTERRUPTEUR GAUCHE PÉDALE PEDAL INTERRUPTOR IZQ.	PEDAL SCHALTER LINKS INTERRUPTOR PEDAL ESQ	1		
13	EAC0099G29A	CAMMA PEDALE CAM PEDAL	CAME PÉDALE LEVA PEDAL	SCHALTNOCKEN CAMES PEDAL	1		
14	EAS2115G09A	LAMIERA PROTEZIONE CAMMA PROTECTION SHEET FOR CAM	TOLE PROTECTION CAME CHAPA PROTECCIÓN LEVA	SCHUTZBLECH SCHALTNOCKEN CHAPA PROTECÇÃO CAMES	1		
15	EAS2111G73A	BIELLA POSIZIONATRICE PEDALE ROD POSITIONER PEDAL	BIELLE DE POSITION PEDALE BIELA POSICIONADORA PEDAL	STANGE PEDALPOSITION BIELA POSICIONADORA PEDAL	1		
16	EAS2111G58A	LAMIERA SUPPORTO SWITCH SWITCH SHEET SUPPORT	TOLE SUPPORT INTERRUPTEUR CHAPA SOPORTE INTERRUPTOR	TRAGBLECH SCHALTER CHAPA SUPORTE INTERRUPTOR	1		
17	EAA0351G78A	VALVOLA PER MOTORE ARIA SINISTRA/ LEFT VALVE AIR ENGINE	SOUPAPE POUR MOTEUR AIR GAUCHE VÁLVULA IZQ. PARA MOTOR AIRE	VENTIL LUFTMOTOR LINKS VÁLVULA ESQUERDA PARA MOTOR AR	1		
18	EAK0279G42A	KIT COLLEGAMENTO VALVOLE KIT FOR AIR ENGINE	KIT RACCORDEMENT VALVES KIT CONEXIÓN VÁLVULAS	ANSCHLUSSSATZ VENTILE KIT LIGAÇÃO VÁLVULAS	1		
19	EAK0279G39A	KIT VITI PEDALIERA NUTS/SCREWS FOR FOOT PEDAL ASM	KIS VIS JEU PÉDALES KIT TORNILLOS JUEGO DE PEDALES	SCHRAUBENSATZ PEDALSTEUERUNG KIT PARAFUSOS PEDALEIRA	1		



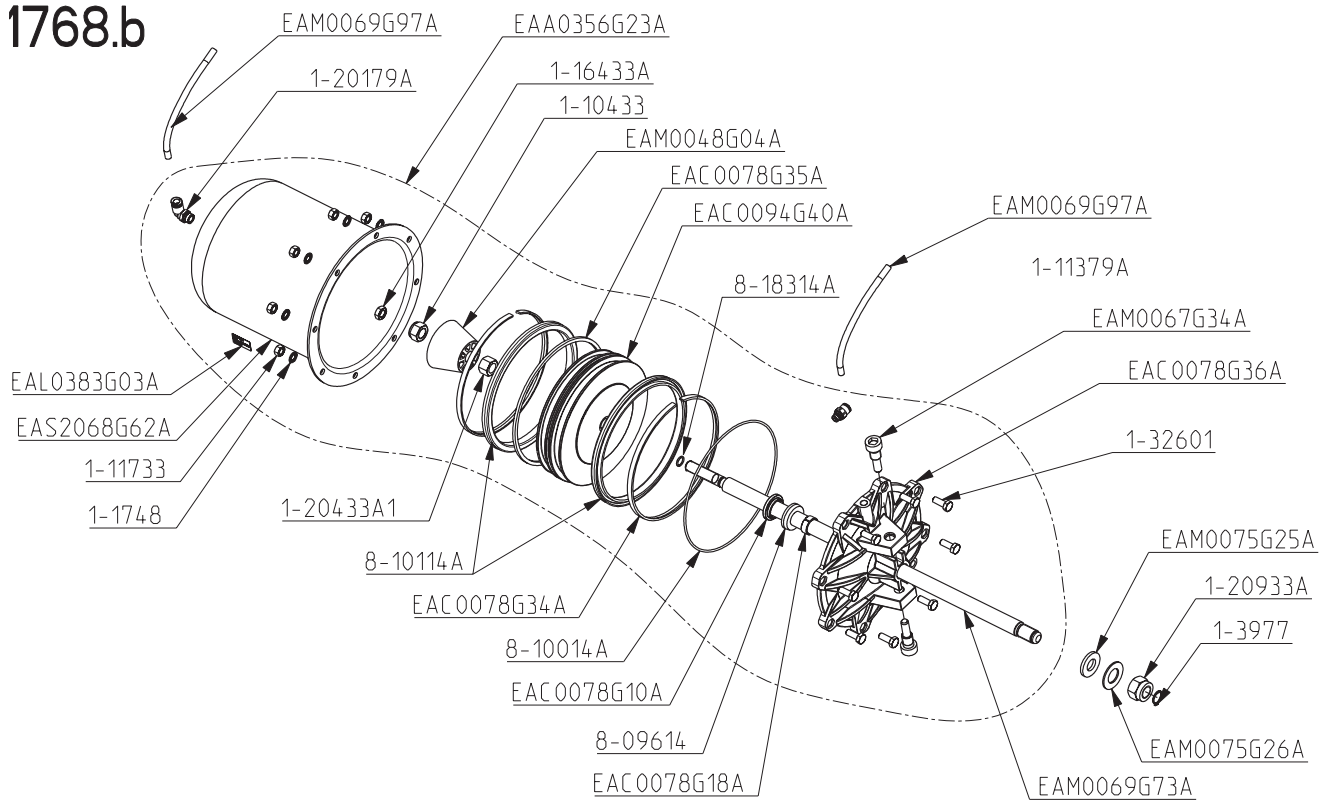
**AIR VERSION
C4027415**

01/2003

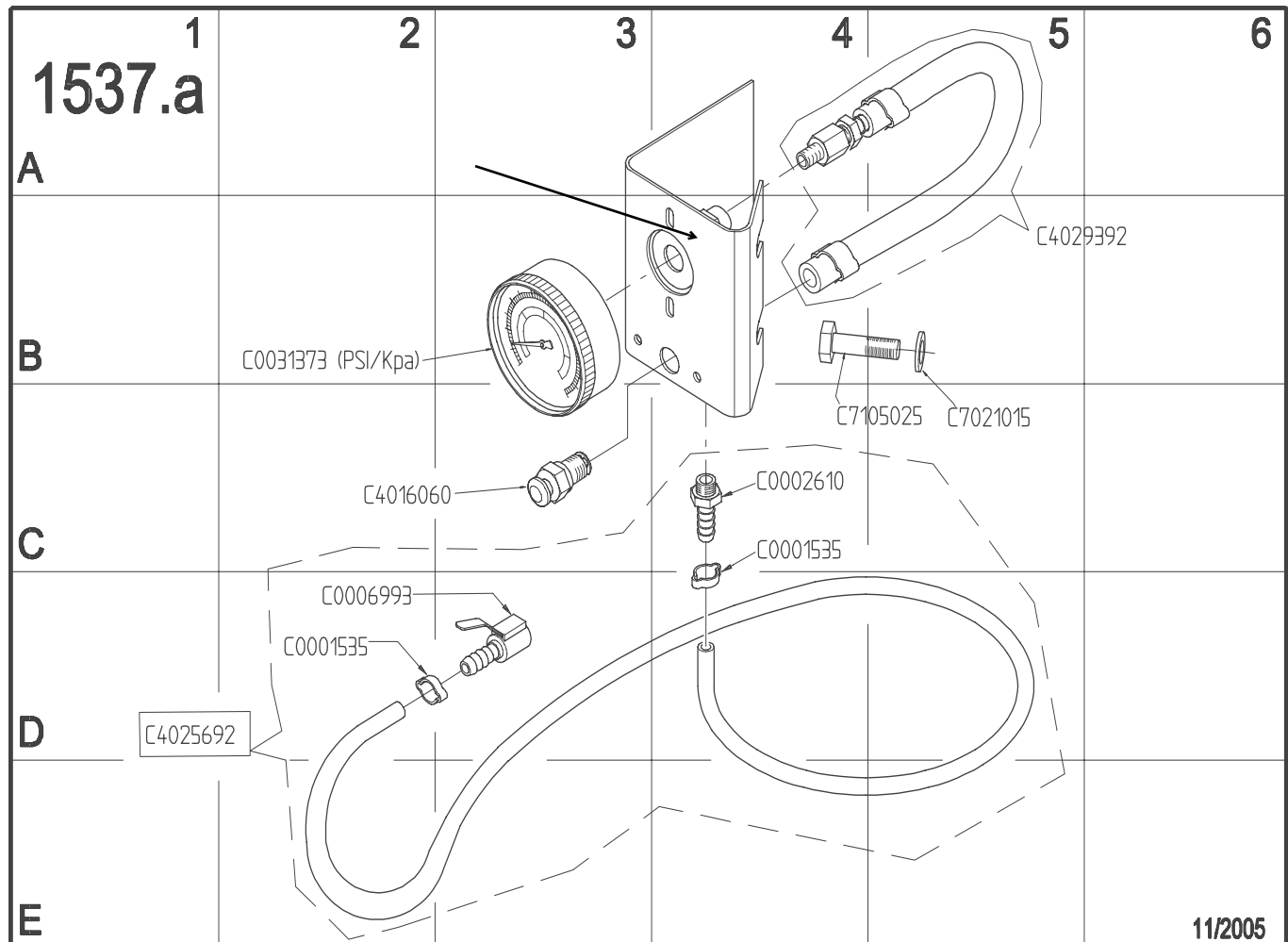


Booklet number: 131 _ REV. C _

1768.b

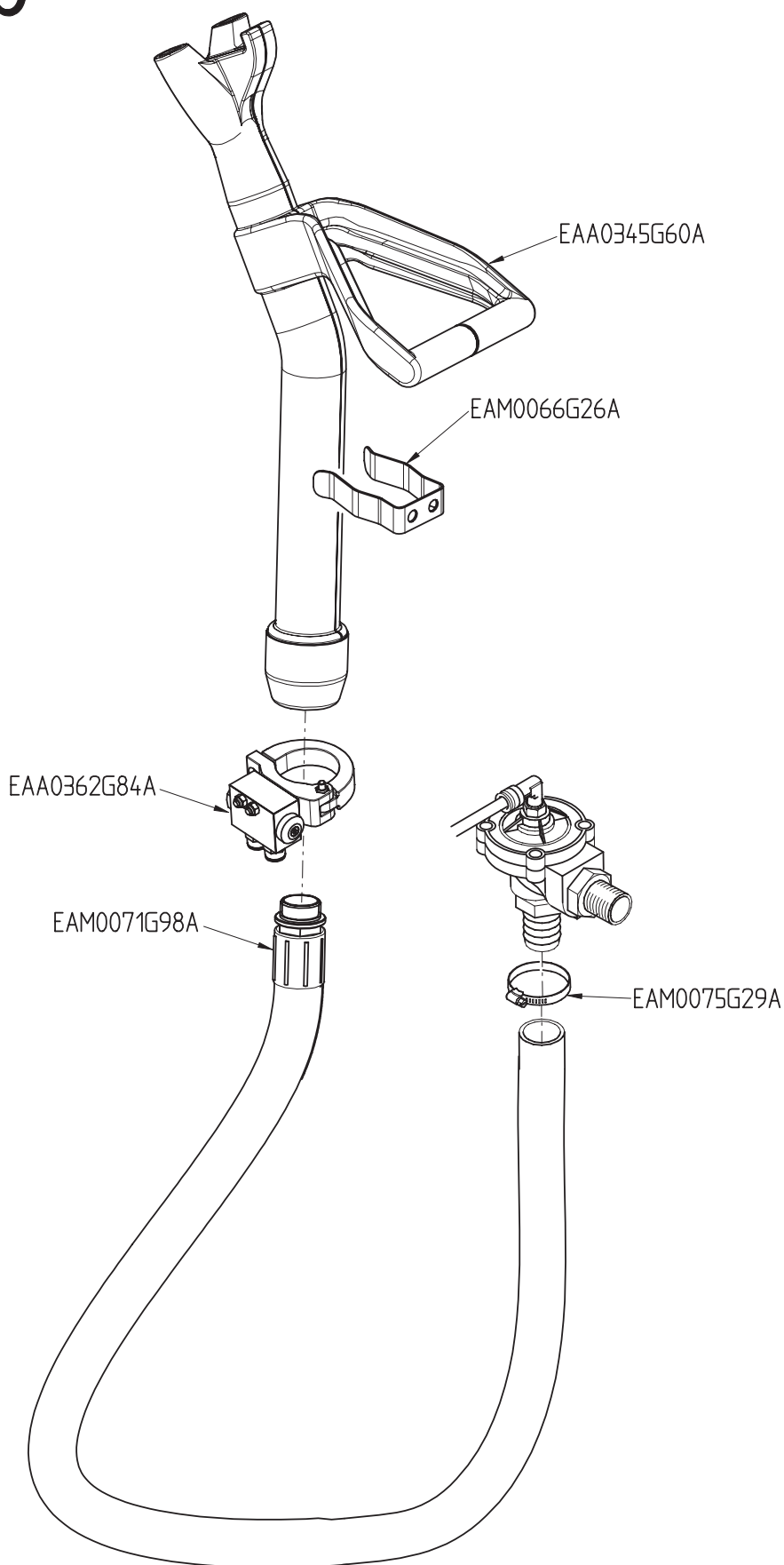


09/2011



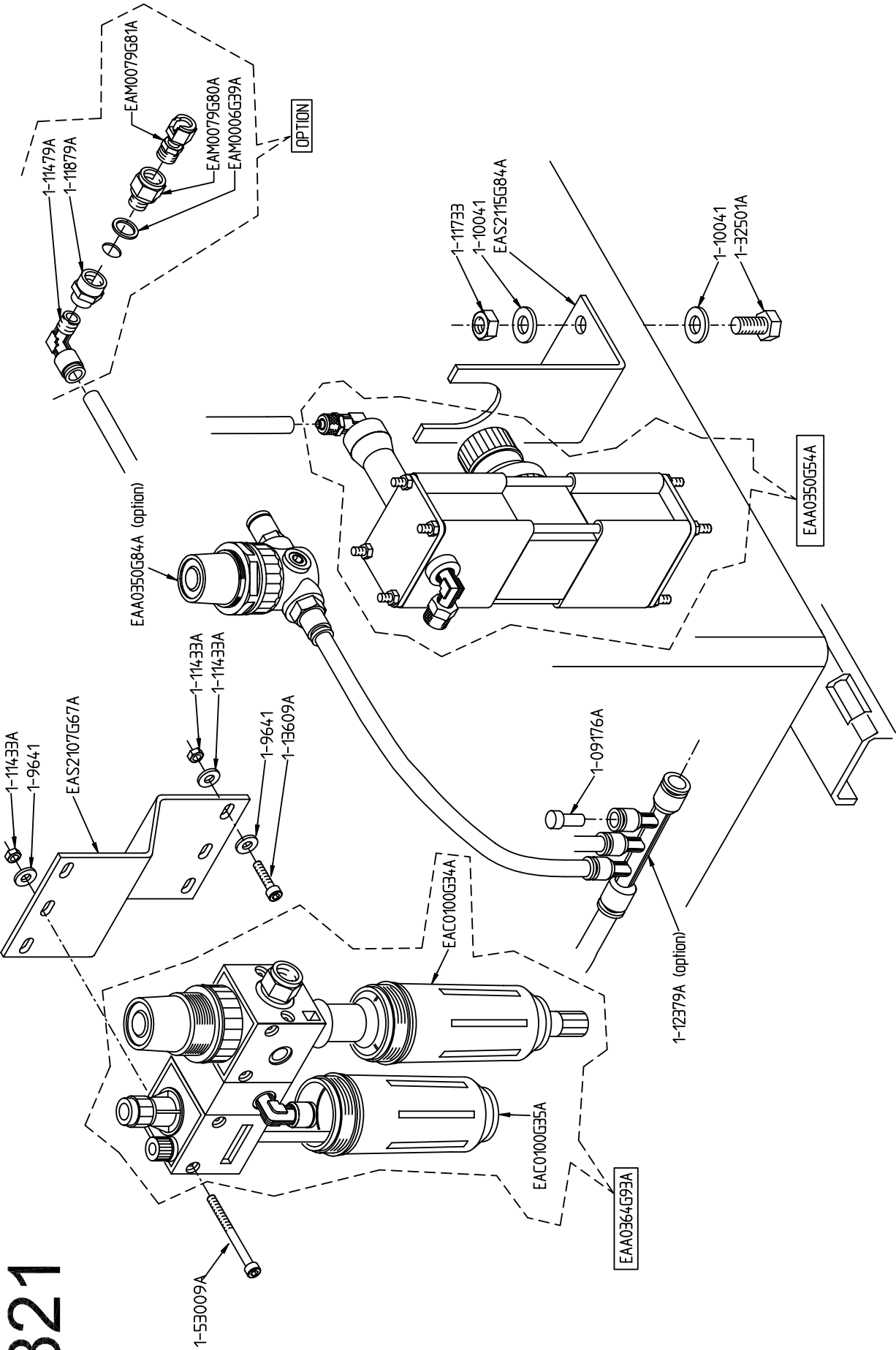
11/2005

1739.b



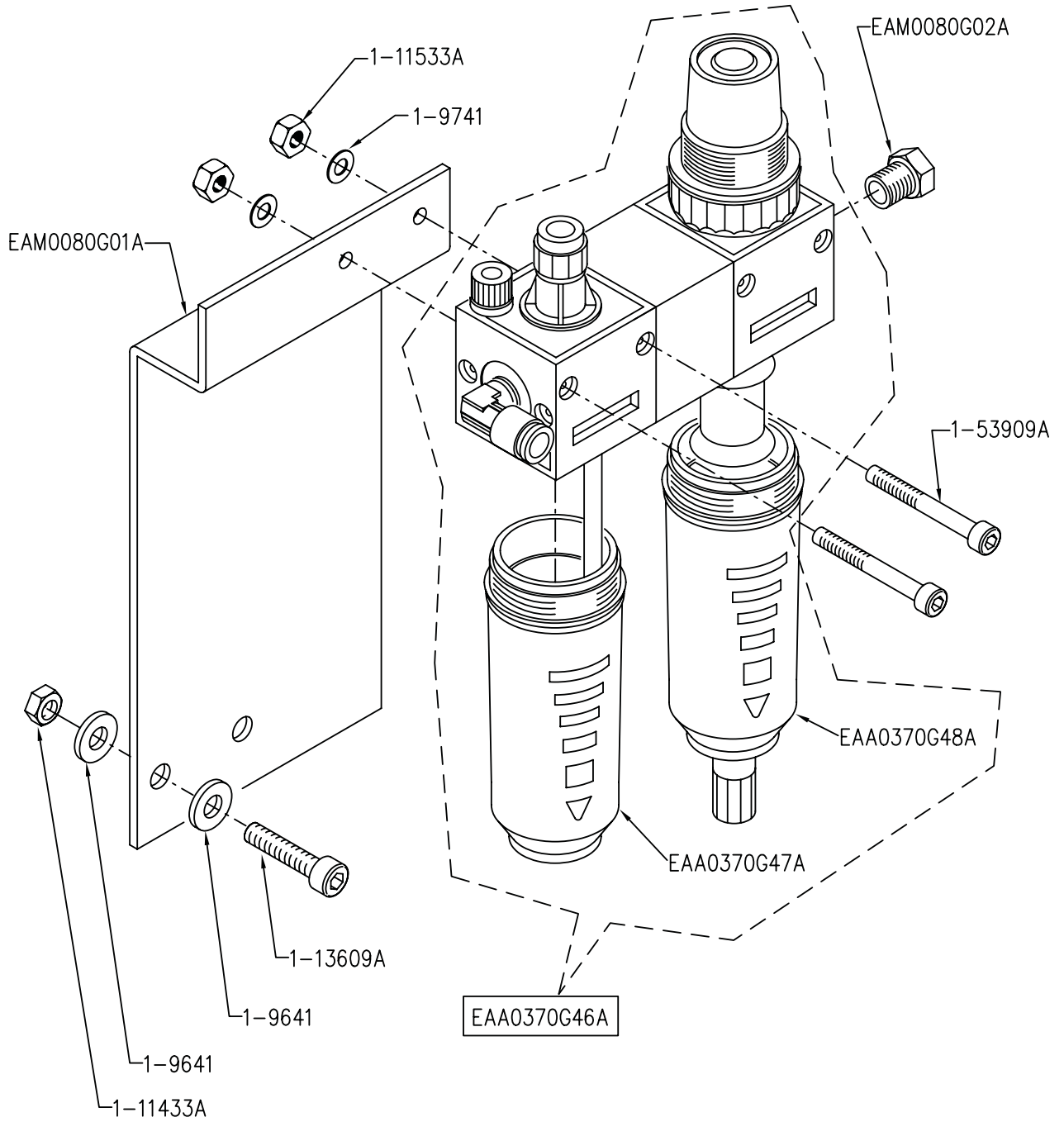
Booklet number: 131 _ REV. C _

09/2010



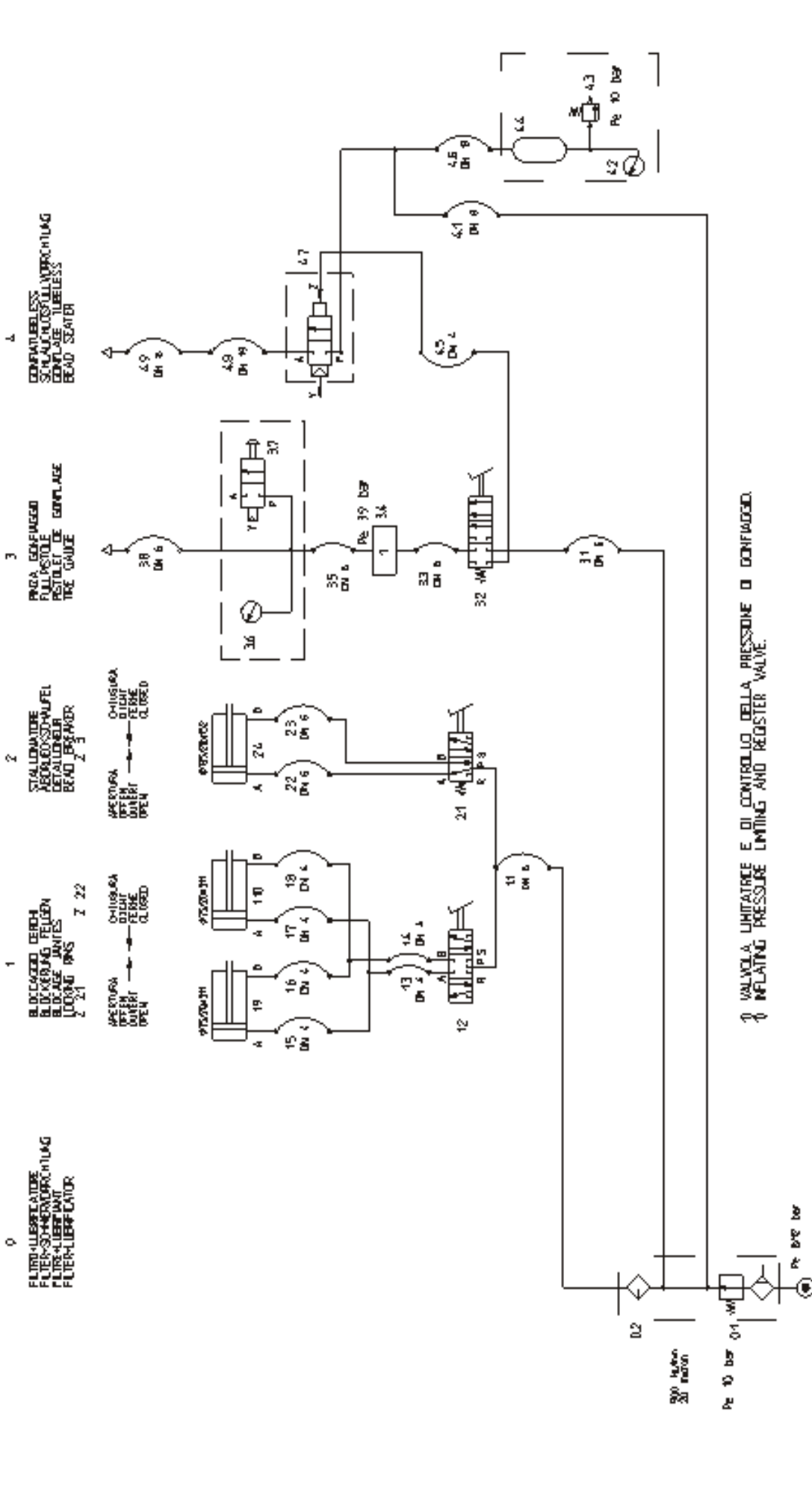
1821

1822



Booklet number: 131 _ REV. C _

AIR VERSION
02/2011



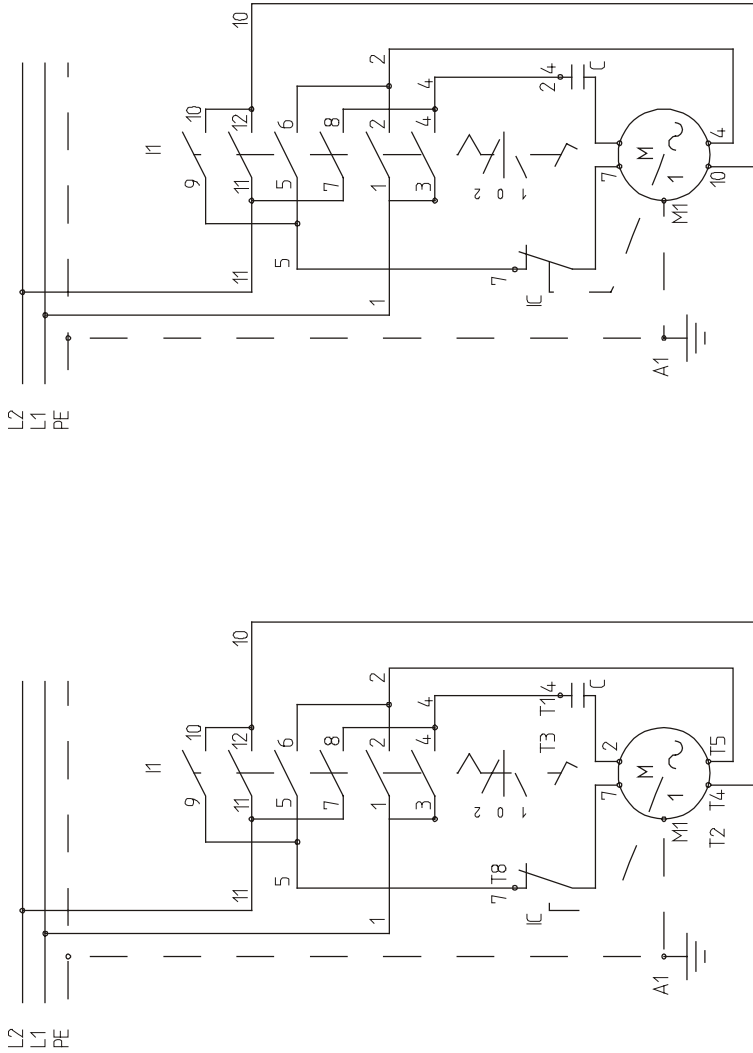
VALVOLA LIMITATRICE E DI CONTROLLO DELLA PRESSIONE DI GOMMATURA
INFLATING PRESSURE LIMITING AND REGISTER VALVE

Nr.	MODIFICA / REVISION	MODIFICATION / CHANGE	DATA DATA / DATE	NOTE / NOTE
GRUPPO VALVOLA / VALVE GROUP Nr. di pagine / No. of pages 1 / 2				
FAMILIA / FAMILY 824				
CODICE / CODE 0027324				
SCHEMA PNEUMATICO / SCHEMA PNEUMATIQUE SCHEMA PNEUMATISCHEN / SCHEMA PNEUMATISCHEN SCHEMA PNEUMATISCHEN / SCHEMA PNEUMATISCHEN				
BILIBIT CUSTOMER / BILIBIT CUSTOMER Nr. ordine / Auftrags-Nr. /				
FIRMARE / SIGNATURE VALORI G / VALUES G DATA DATA / DATE 2002/03/19				
INVENTAR / INVENTORY CONTROLLO / CONTROL TESTATO / TESTED BY				
TIPO / TYPE MODELLO / MODEL 1565-1620				
COOIDE / MACHINE CODE INVENTAR / INVENTORY MACHINE / MACHINE CODE / CODE				
FABBRITAZIONE / MANUFACTURE IN ITALY				
DATA DATA / DATE				

Booklet number: 131 _ REV. C _

4.3	1	VALVOLA DI SICUREZZA SAFETY VALVE SICHERHEITSSCHRAUBE																				
4.4	1	TUBO FLESSIBILE FLEXIBLE TUBE FLEXIBLER SCHLAUCH	MAZZER NAT PLASTONE																			
4.5	1	TUBO FLESSIBILE FLEXIBLE TUBE FLEXIBLER SCHLAUCH	MAZZER NAT PLASTONE																			
4.6	1	TUBO FLESSIBILE FLEXIBLE TUBE FLEXIBLER SCHLAUCH	MAZZER NAT PLASTONE																			
4.7	1	VALVOLA A 2 VIE CONNESSIONE FONTO CORRE A 2 VIE INDENTATA VALVE			BEAL NP 20 BVA 80 x 130																	
4.8	1	MANOMETRO MANOMETER MANOMETER	STAMPOTEDICA																			
4.9	1	AIR CONTROL																				
4.10	1	VALVOLA A 4 VIE CONNESSIONE FONTO CORRE A 4 VIE INDENTATA VALVE																				
4.11	1	TUBO FLESSIBILE FLEXIBLE TUBE FLEXIBLER SCHLAUCH																				
4.12	1	VALVOLA A 5 VIE CONNESSIONE FONTO CORRE A 5 VIE INDENTATA VALVE																				
4.13	1	VALVOLA A 5 VIE CONNESSIONE FONTO CORRE A 5 VIE INDENTATA VALVE																				
4.14	1	VALVOLA A 5 VIE CONNESSIONE FONTO CORRE A 5 VIE INDENTATA VALVE																				
4.15	1	VALVOLA A 5 VIE CONNESSIONE FONTO CORRE A 5 VIE INDENTATA VALVE																				
4.16	1	VALVOLA A 5 VIE CONNESSIONE FONTO CORRE A 5 VIE INDENTATA VALVE																				
4.17	1	VALVOLA A 5 VIE CONNESSIONE FONTO CORRE A 5 VIE INDENTATA VALVE																				
4.18	1	VALVOLA A 5 VIE CONNESSIONE FONTO CORRE A 5 VIE INDENTATA VALVE																				
4.19	1	VALVOLA A 5 VIE CONNESSIONE FONTO CORRE A 5 VIE INDENTATA VALVE																				
4.20	1	VALVOLA A 5 VIE CONNESSIONE FONTO CORRE A 5 VIE INDENTATA VALVE																				
4.21	1	VALVOLA A 5 VIE CONNESSIONE FONTO CORRE A 5 VIE INDENTATA VALVE																				
4.22	1	VALVOLA A 5 VIE CONNESSIONE FONTO CORRE A 5 VIE INDENTATA VALVE																				
4.23	1	VALVOLA A 5 VIE CONNESSIONE FONTO CORRE A 5 VIE INDENTATA VALVE																				
4.24	1	VALVOLA A 5 VIE CONNESSIONE FONTO CORRE A 5 VIE INDENTATA VALVE																				
4.25	1	VALVOLA A 5 VIE CONNESSIONE FONTO CORRE A 5 VIE INDENTATA VALVE																				
4.26	1	VALVOLA A 5 VIE CONNESSIONE FONTO CORRE A 5 VIE INDENTATA VALVE																				
4.27	1	VALVOLA A 5 VIE CONNESSIONE FONTO CORRE A 5 VIE INDENTATA VALVE																				
4.28	1	VALVOLA A 5 VIE CONNESSIONE FONTO CORRE A 5 VIE INDENTATA VALVE																				
4.29	1	VALVOLA A 5 VIE CONNESSIONE FONTO CORRE A 5 VIE INDENTATA VALVE																				
4.30	1	VALVOLA A 5 VIE CONNESSIONE FONTO CORRE A 5 VIE INDENTATA VALVE																				
4.31	1	VALVOLA A 5 VIE CONNESSIONE FONTO CORRE A 5 VIE INDENTATA VALVE																				
4.32	1	VALVOLA A 5 VIE CONNESSIONE FONTO CORRE A 5 VIE INDENTATA VALVE																				
4.33	1	VALVOLA A 5 VIE CONNESSIONE FONTO CORRE A 5 VIE INDENTATA VALVE																				
4.34	1	VALVOLA A 5 VIE CONNESSIONE FONTO CORRE A 5 VIE INDENTATA VALVE																				
4.35	1	VALVOLA A 5 VIE CONNESSIONE FONTO CORRE A 5 VIE INDENTATA VALVE																				
4.36	1	VALVOLA A 5 VIE CONNESSIONE FONTO CORRE A 5 VIE INDENTATA VALVE																				
4.37	1	VALVOLA A 5 VIE CONNESSIONE FONTO CORRE A 5 VIE INDENTATA VALVE																				
4.38	1	VALVOLA A 5 VIE CONNESSIONE FONTO CORRE A 5 VIE INDENTATA VALVE																				
4.39	1	VALVOLA A 5 VIE CONNESSIONE FONTO CORRE A 5 VIE INDENTATA VALVE																				
4.40	1	VALVOLA A 5 VIE CONNESSIONE FONTO CORRE A 5 VIE INDENTATA VALVE																				
4.41	1	VALVOLA A 5 VIE CONNESSIONE FONTO CORRE A 5 VIE INDENTATA VALVE																				
4.42	1	VALVOLA A 5 VIE CONNESSIONE FONTO CORRE A 5 VIE INDENTATA VALVE																				
4.43	1	VALVOLA A 5 VIE CONNESSIONE FONTO CORRE A 5 VIE INDENTATA VALVE																				
4.44	1	VALVOLA A 5 VIE CONNESSIONE FONTO CORRE A 5 VIE INDENTATA VALVE																				
4.45	1	VALVOLA A 5 VIE CONNESSIONE FONTO CORRE A 5 VIE INDENTATA VALVE																				
4.46	1	VALVOLA A 5 VIE CONNESSIONE FONTO CORRE A 5 VIE INDENTATA VALVE																				
4.47	1	VALVOLA A 5 VIE CONNESSIONE FONTO CORRE A 5 VIE INDENTATA VALVE																				
4.48	1	VALVOLA A 5 VIE CONNESSIONE FONTO CORRE A 5 VIE INDENTATA VALVE																				
4.49	1	VALVOLA A 5 VIE CONNESSIONE FONTO CORRE A 5 VIE INDENTATA VALVE																				
4.50	1	VALVOLA A 5 VIE CONNESSIONE FONTO CORRE A 5 VIE INDENTATA VALVE																				

3	9-10										
2	11-12										
1	5-6										
	7-8										
	1-2										
	3-4										
									1	0	2



MODIFICA: 1 AGGIORNATO SCHEMA PER MOTORE LEESON / 13-05-99 / FL
 21 AGGIUNTO SCHEMA PER MOTORE LEESON / 2001-03-12 / PRATZOU

MOTORE AO SMITH
 MOTEUR AO SMITH
 MOTOR AO SMITH
 MOTOR AO SMITH

MOTORE LEESON
 MOTEUR LEESON
 MOTOR LEESON
 MOTOR LEESON

SCHEMA COLLEGAMENTO INVERTITORE
 SCHEMA DE CONNECTION DE L'INVERSEUR
 INVERTER CONNECTION DIAGRAM
 WENDEGETRIEBE ANSCHLUSSPLAN

T ALLACCIAMENTO MORSETTIERA MOTORE
 T CONNECTION DES ETALUX DU MOTEUR
 T MOTOR TERMINAL BOARD CONNECTION
 T MOTOR - KLEMMENBRETT ANSCHLUSS
 C CONDENSATORE
 C INT. CENTRIFUGO
 I1 INVERTITORE
 M1 MOTORE
 A1 CARCASSA

CAPACITOR
 SPINNING SWITCH
 REVERSING SWITCH
 MOTOR
 FRAME

KONDENSATOR
 SCHLEIDERSCHALTER
 WENDESCHALTER
 MOTOR
 GEHAUSE

MATERIALE	STATO MATERIALE	DIMENSIONI	TRATTAMENTI	HRC
TOLLERANZE QUOTE LIBERE JS 14 - JS 14	SMUSST E RAGGI NON QUOTATI: 0,5 mm	DISSEGNO FUSARI 1999-05-13		HB
ORIGINE:	PROGETTISTA VISTO DIR. TECNICO: SCALA	DATA 1999-05-13	SOSTITUISCE IL N. DEL 02-11-92	Sh
	FAMIGLIA 824		SOSTITUITO DAL N. COD. SNAP-ON	
	PROGETTO 3400			
	DENOMINAZIONE SCHEMA ELETTRICO MOTORE MONDIFASE AMERICANO			DIS. N. 0014449
				REV

ITA - DICHIARAZIONE CE DI CONFORMITA'

ENG - DECLARATION OF CE CONFORMITY
SPA - DECLARACIÓN CE DE CONFORMIDAD
POR - DECLARAÇÃO CE DE CONFORMIDADE
ALB - DEKLARATË KONFORMITETI KE
BUL - ДЕКЛАРАЦИЯ ЗА СЪОТВЕТСТВИЕ
CES - ES PROHLÁŠENÍ O SHODĚ
HRV - DEKLARACIJA CE O PODOBNOSTI
DAN - EF-OVERENSSTEMMELSESERKLÆRING
EST - EÜ VASTAVUSDEKLARATSIOON
FIN - EY-VAATIMUSTENMUKAISUUSVAKUUTUS
ELL - ΔΗΛΩΣΗ CE ΣΥΜΜΟΡΦΩΣΗΣ
ISL - EB-SAMRÆMISYFIRLÝSING
LAV - ES ATBILSTÍBAS DEKLARÁCIJA
FRA - DECLARATION CE DE CONFORMITE
DEU - KONFORMITÄT SERKLÄRUNG
LIT - ATITIKTIES DEKLARACIJA
MKD - "EC" ДЕКЛАРАЦИЈА ЗА СООБРАЗНОСТ
MON - DEKLARACIJA CE O USKLAĐENOSTI
NLD - VERKLARING VAN OVEREENSTEMMING
POL - DEKLARACJA ZGODNOŚCI "CE"
RUM - DECLARAȚIE DE CONFORMITATE CU NORMELE CE
SLO - ES VYHLÁŠENIE O ZHODE
SLV - IZJAVA O SKLADNOSTI CE
SWE - EG-FÖRSÄKRAN OM ÖVERENSSTÄMMELSE
TUR - EC UYGUNLUK BEYANNAMESİ
HUN - EK MEGFELELŐSÉGI NYILATKOZAT

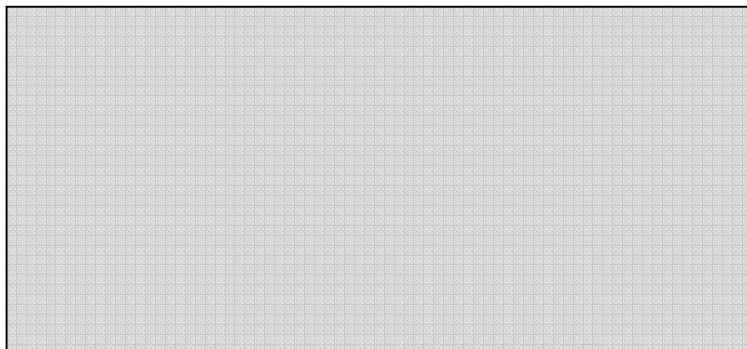
Snap-on Equipment Srl
Via Provinciale per Carpi, 33
42015 Correggio (RE) Italy

ITA - dichiara sotto la propria responsabilità che la macchina: **SMONTAGOMME**
ENG - takes full responsibility for declaring that the machine: **TIRE CHANGER**
SPA - declara bajo su propia responsabilidad que la máquina: **DESMONTADOR DE NEUMÁTICOS**
POR - declara sob a própria responsabilidade que a máquina: **DEMONTADORA DE PNEUS**
FRA - déclare sous sa propre responsabilité que la machine : **DEMONTÉ-PNEUS**
DEU - erklährt auf eigene Verantwortung, dass die Maschine: **REIFENMONTIERMASCHINE**
ALB - deklarón nën përgjegjësinë e tij se makineria: **ÇMONTUESE GOMASH**
BUL - декларира под отговорност, че машината: **МАШИНА ЗА ДЕМОНТАЖ НА ГУМИ**
CES - prohlašuje na vlastní zodpovědnost, že strojní zařízení: **ZOUVAČKA PNEUMATIK**
HRV - izjavljuje pod vlastitom odgovornošću da stroj: **DEMONTIRAČ GUMA**
DAN - erklærer på eget ansvar, at maskinen: **DÆKAFMONTERINGSMASKINE**
EST - kinnitab omal vastutusel, et aparaat: **REHVIVAHETUSSEADE**
FIN - vakuuttaa omalla vastuullaan, että kone: **RENKAANVAIHETUKONE**
ELL - δηλώνει υπεύθυνα ότι η μηχανή: **ΜΟΧΛΟΣ ΑΦΑΙΡΕΣΗΣ ΑΕΡΟΘΑΛΑΜΟΥ**
ISL - lýsir því yfir á eigin ábyrgð að bíllinn: **AFFELGUNARVÉL**
LAV - apzinādāties savu atbildību apliecina, ka mašīna/iekārta: **RIEPU MONTĀPAS IEKĀRTA**
LIT - prisiimdama atsakomybę skelbia, kad mašina: **PADANGŲ KEITIMO PRIETAISAS**
MKD - изјавува под своја одговорност дека машината: **ДЕМОНТИРАЧ НА ГУМИ**
MON - izjavljuje pod vlastitom odgovorošću da mašina: **DEMONTIRKA GUMA**
NLD - verklaart voor eigen verantwoordelijkheid dat de machine: **BANDENLICHTER**
POL - oświadcza na własną odpowiedzialność, że maszyna: **URZĄDZENIE DO ZDEJMOWANIA OPON**
RUM - declară pe propria răspundere că mașina: **DISPOZITIV DE DEMONTAT CAUCIUCURI**
SLO - vyhlasuje na vlastnú zodpovednosť, že strojové zariadenie: **VYZÚVAČKA PNEUMATÍK**
SLV - pod lastno odgovornostjo izjavljamo, da je stroj: **SNEMALEC GUM**
SWE - försäkrar under eget ansvar att maskinen: **DÄCKMONTERINGSMASKIN**
TUR - kendi sorumluluğu altında makinenin aşağıda belirtilen yönetmeliklere uygun olduğunu beyan etmektedir: **LASTİK SÖKÜCÜ**
HUN - a saját felelőssége tudatában kijelenti, hogy a gép: **GUMISZERELŐ**

HOFMANN



HOFMANN



- ITA** - è conforme a tutte le disposizioni pertinenti delle seguenti direttive:
ENG - complies with all the relevant regulations in the following directives:
SPA - es conforme con todas las disposiciones pertinentes a las siguientes directivas:
POR - satisfaz todas as disposições relevantes das seguintes directivas:
FRA - est conforme à toutes les dispositions pertinentes des directives suivantes :
DEU - Allen zu folgenden Richtlinien gehörenden Bestimmungen entspricht:
ALB - është konform me të gjitha dispozitat që kanë të bëjnë me direktivat e mëposhtme:
BUL - съответства на всички разпоредби, съдържащи се в следващите директиви:
CES - vyhovuje všem požadavkům, které se vztahují na následující směrnice:
HRV - udovoljava svim relevantnim odredbama slijedećih smjernica:
DAN - er i overensstemmelse med bestemmelserne i følgende direktiver:
EST - vastab järgmistele direktiivide kõikidele asjassepuutuvatele sätetele:
FIN - on seuraavien direktiivien asiaankuuluvien säännösten mukainen:
ELL - είναι σύμφωνα με όλες τις προβλέψεις σχετικές με τις ακόλουθες οδηγίες:
ISL - er í samræmi við allar viðeigandi tilskipanir eftirfarandi reglugerða:
LAV - atbilst visiem attiecīgajiem noteikumiem šādās direktīvās:
LIT - atitinka visus toliau nurodytų direktyvų reikalavimus:
MKD - е во согласност со сите норми од следниве директиви:
MON - je u skladu sa svim relevantnim odredbama sledećih direktiva:
NLD - overeenstemt met alle toepasselijke voorschriften van de volgende richtlijnen:
POL - jest zgodna (jest zgodny) ze wszystkimi zarządzeniami zawartymi w następujących dyrektywach:
SLO - vyhovuje všetkým požiadavkám, vzťahujúcim sa na nasledujúce smernice:
SLV - v skladu z vsemi predpisi, ki se nanašajo na naslednje direktive:
SWE - överensstämmer med alla bestämmelser tillhörande följande direktiv:
TUR - aşağıda belirtilen yönetmeliklere ilişkin tüm hükümlere uygundur:
HUN - megfelel a következő irányelvekbe foglalt, valamennyi rendelkezésnek:

2006/42/CE

2006/95/CE

2004/108/CE

ITA-Il Responsabile dell'Ufficio Tecnico è autorizzato a costituire il fascicolo tecnico di cui all'allegato VII lettera A della direttiva 2006/42/CE.

ENG-The Manager of the Technical Office is authorised to compile a technical leaflet in compliance with appendix VII, letter A, of the 2006/42/CE directive.

SPA-El Responsable del Departamento Técnico está autorizado a constituir el fascículo técnico indicado en el anexo VII letra A de la directiva 2006/42/CE.

POR-O Responsável do Gabinete Técnico está autorizado a compilar o processo técnico, referido no anexo VII alínea A da directiva 2006/42/CE.

FRA-Le Responsable du Bureau Technique est autorisé à constituer le fascicule technique visé sous l'annexe VII lettre A de la directive 2006/42/CE.

DEU-Der Leiter der technischen Abteilung ist bevollmächtigt, die technischen Unterlagen zu erstellen (siehe Anhang VII, Buchstabe A der Richtlinie 2006/42/CE).

ALB-Përgjegjësi i Zyrës Teknike është i autorizuar të realizojë fashikullin teknik sipas dokumentit bashkëngjitur VII germa A e direktivës 2006/42/KE.

BUL-Отговорникът на Техническият отдел е упълномощен да състави техническата брошура в съответствие с Приложение VII, буква „А“ на Директива 2006/42/EC.

CES-Zodpovědný pracovník technického oddělení je oprávněný vypracovat technickou dokumentaci podle přílohy VII části A Směrnice 2006/42/ES.

HRV-Odgovorna osoba Tehničkog ureda je ovlaštena ustrojiti tehnički svezak kako se vidi u dodatku VII slovo A smjernice 2006/42/CE.

DAN-Chefen i den tekniske afdeling har tilladelse til udarbejdelse af den tekniske dokumentation jf. bilag VII litra A i direktivet 2006/42/EF.

EST-Tehnoosakonna vastutav töötaja on volitatud koostama tehnilise toimiku vastavalt direktiivi 2006/42/EÜ VII lisa osale A.

FIN-Teknisen toimiston vastuhenkilö on valtuutettu kokoamaan tekninen eritelmä direktiivin 2006/42/EY liitteen VII kohdan A mukaisesti.

ELL-Ο Υπεύθυνος του Τεχνικού Γραφείου είναι εξουσιοδοτημένος να παράξει τον τεχνικό φάκελο σύμφωνα με το συννημένο VII γράμμα Α της οδηγίας 2006/42/ΕΚ.

ISL-Ábyrgðarmanni tækniskrifstofunnar er heimilt að gera tækniskjalið samkvæmt A-lið VII. viðauka í reglugerð 2006/42/EB.

LAV-Tehnikās nodaļas vadītājs ir pilnvarots sastādīt tehnisko dokumentāciju atbilstoši ES direktīvas 2006/42/EK VII pielikuma A iedaļai.

LIT-už techninį skyrių atsakingas asmuo yra įgaliotas sudaryti techninę bylą, kurios sudarymo tvarka nurodyta Direktyvos 2006/42/EB VII priedo A dalyje.

MKD-Одговорникот на техничкиот оддел е овластен да го состави техничкиот прирачник даден во прилог VII писмо А од директивата 2006/42/CE.

MON-Odgovorno lice Tehničkog ureda je ovlašteno da sastavi tehničku fasciklu kako se vidi u dodatku VII slovo A direktive 2006/42/CE.

NLD-Het Hoofd van de Technische Afdeling is gemachtigd om het technisch dossier samen te stellen waarover in Bijlage VII, afdeling A, van de richtlijn 2006/42/EG.

POL-Kierownik Biura Projektowego jest upoważniony do założenia skoroszytu technicznego, o którym mowa w Załączniku VII litera A dyrektywy 2006/42/UE.

RUM-Responsabilul Biroului Tehnic este autorizat să întocmească dosarul tehnic prevăzut în anexa VII litera A din directiva 2006/42/CE privind echipamentele tehnice.

SLO-Zodpovedný pracovník technického oddelenia je oprávněný vypracovať technickú dokumentáciu podľa prílohy VII časti A Smernice 2006/42/ES.

SLV-Vodja tehničnega urada je pooblaščen za sestavo tehnične mape, kot navedeno v prilogi VII, črka A direktive 2006/42/ES.

SWE-Ansvarig på det tekniska kontoret har behörighet att sammanställa medföljande teknisk dokumentation i enlighet med avsnitt A i bilaga VII i direktiv 2006/42/EG.

TUR-Teknik Ofis Sorumlusu 2006/42/EC Yönetmeliği'nin VII. ekinin A harfinde belirtilen teknik dosyayı hazırlamaya yetkilidir.

HUN-A Műszaki Iroda Irodavezetője feljogosított a 2006/42/EK irányelv A részének VII. Mellékletében meghatározott, műszaki dokumentáció összeállítására.

ITA-Direttore Operativo

ENG-Operations Manager **SPA**-Director Operativo **POR**-Director Operacional **FRA**-Directeur Opérationnel **DEU**-Betriebsleiter **ALB**-Drejtori Operativ **BUL**-Оперативен директор **CES**-Výkonný ředitel **HRV**-Operativni direktor **DAN**-Driftsleder **EST**-Tegevdirektor **FIN**-Operatiivinen johtaja **ELL**-Επιχειρησιακός Διευθυντής **ISL**-Starfandi framkvæmdarstjóri **LAV**-Operatīvais direktors **LIT**-Operacijų vadovas **MKD**-Оперативен директор **MON**-Operativni direktor **NLD**-Operationeel directeur **POL**-Dyrektor Operacyjny **RUM**-Director Operator **SLO**-Výkonný riaditeľ **SLV**-Operativni vodja **SWE**-Driftledare **TUR**-İşletme Müdürü **HUN**-Operatív Igazgató

Francesco Frezza

F. Frezza

CE

Correggio (RE) Italy,

date: _____

Booklet number: 131 _ REV. C _

B L A N K P A G E

Notice: The information contained in this document is subject to change without notice. Hofmann makes no warranty with regard to present documentation. Hofmann shall not be liable for errors contained herein or for incidental consequential damages in connection with furnishings, performance, or use of this material.



HOFMANN USA

309 Exchange Ave. Conway, AR 72032
www.hofmann-usa.com

Phone 800-251-4500

Fax 501-450-2085

HOFMANN BALANCING TECHNIQUES LTD. CANADA

6500 Millcreek Dr. Mississauga, Ontario L5N 4G4
www.hofmann.ca

Phone 800-267-2185

Fax 905-821-2073

SOE Digital Code: SP_MONTY1620-1625_10-11_TEEWH715A3_RC